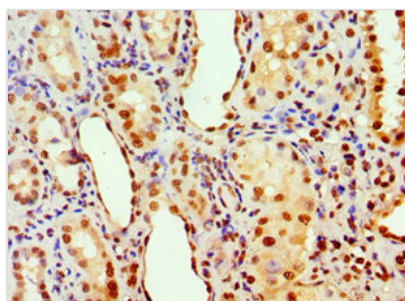




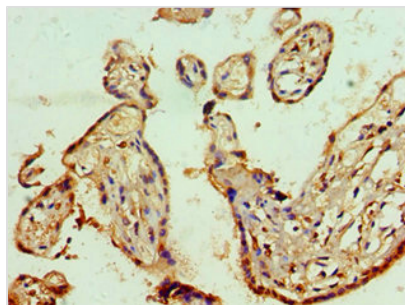
ANP32A Antibody

Product Code	CSB-PA001822ESR2HU
Storage	Upon receipt, store at -20°C or -80°C. Avoid repeated freeze.
Uniprot No.	P39687
Immunogen	Recombinant Human Acidic leucine-rich nuclear phosphoprotein 32 family member A protein (1-170AA)
Raised In	Rabbit
Species Reactivity	Human
Tested Applications	ELISA, IHC, IF; Recommended dilution: IHC:1:20-1:200, IF:1:50-1:200
Form	Liquid
Conjugate	Non-conjugated
Storage Buffer	PBS with 0.02% sodium azide, 50% glycerol, pH7.3.
Purification Method	Antigen Affinity Purified
Isotype	IgG
Clonality	Polyclonal
Alias	Acidic leucine-rich nuclear phosphoprotein 32 family member A (Acidic nuclear phosphoprotein pp32) (pp32) (Leucine-rich acidic nuclear protein) (LANP) (Mapmodulin) (Potent heat-stable protein phosphatase 2A inhibitor I1PP2A) (Putative HLA-DR-associated protein I) (PHAPI), ANP32A, C15orf1 LANP MAPM PHAP1
Immunogen Species	Homo sapiens (Human)
Research Area	Cell Biology
Target Names	ANP32A

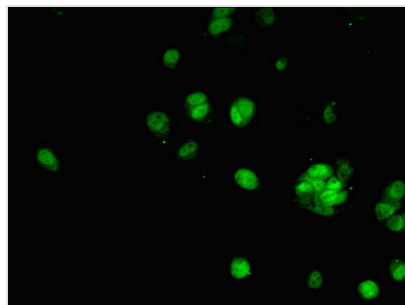
Image



Immunohistochemistry of paraffin-embedded human kidney tissue using CSB-PA001822ESR2HU at dilution of 1:100



Immunohistochemistry of paraffin-embedded human placenta tissue using CSB-PA001822ESR2HU at dilution of 1:100



Immunofluorescent analysis of MCF-7 cells using CSB-PA001822ESR2HU at dilution of 1:100 and Alexa Fluor 488-conjugated AffiniPure Goat Anti-Rabbit IgG(H+L)