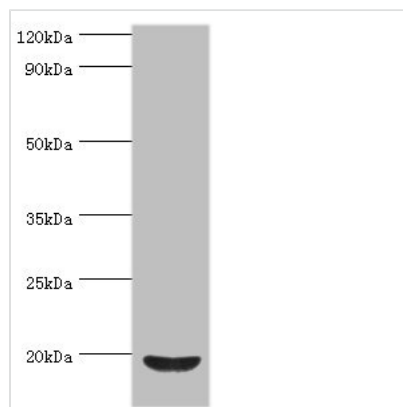




ACP1 Antibody

Product Code	CSB-PA001176ESR2HU
Storage	Upon receipt, store at -20°C or -80°C. Avoid repeated freeze.
Uniprot No.	P24666
Immunogen	Recombinant Human Low molecular weight phosphotyrosine protein phosphatase protein (1-158AA)
Raised In	Rabbit
Species Reactivity	Human
Tested Applications	ELISA, WB, IHC; Recommended dilution: WB:1:200-1:1000, IHC:1:20-1:200
Form	Liquid
Conjugate	Non-conjugated
Storage Buffer	PBS with 0.02% sodium azide, 50% glycerol, pH7.3.
Purification Method	Antigen Affinity Purified
Isotype	IgG
Clonality	Polyclonal
Alias	Low molecular weight phosphotyrosine protein phosphatase (LMW-PTP) (LMW-PTPase) (EC 3.1.3.48) (Adipocyte acid phosphatase) (Low molecular weight cytosolic acid phosphatase) (EC 3.1.3.2) (Red cell acid phosphatase 1), ACP1
Immunogen Species	Homo sapiens (Human)
Research Area	Cell Biology
Target Names	ACP1

Image



Western blot

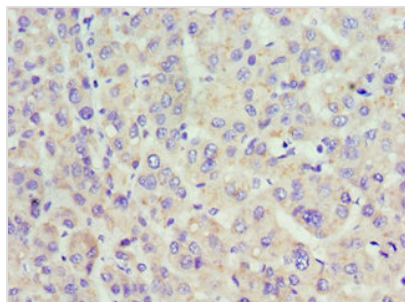
All lanes: Low molecular weight phosphotyrosine protein phosphatase antibody at 4µg/ml + HepG2 whole cell lysate

Secondary

Goat polyclonal to rabbit IgG at 1/10000 dilution

Predicted band size: 19, 18, 15, 13 kDa

Observed band size: 19 kDa



Immunohistochemistry of paraffin-embedded human placenta tissue using CSB-PA001176ESR2HU at dilution of 1:100

Usage

For Research Use Only. Not for use in diagnostic or therapeutic procedures.