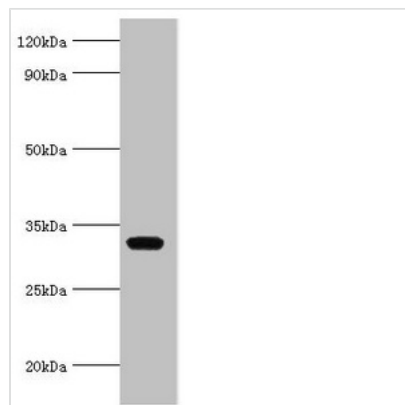




# AGPAT1 Antibody

<b>Product Code</b>	CSB-PA859948ESR1HU
<b>Storage</b>	Upon receipt, store at -20°C or -80°C. Avoid repeated freeze.
<b>Uniprot No.</b>	Q99943
<b>Immunogen</b>	Recombinant Human 1-acyl-sn-glycerol-3-phosphate acyltransferase alpha protein (204-283AA)
<b>Raised In</b>	Rabbit
<b>Species Reactivity</b>	Human
<b>Tested Applications</b>	ELISA, WB, IHC; Recommended dilution: WB:1:200-1:1000, IHC:1:20-1:200
<b>Form</b>	Liquid
<b>Conjugate</b>	Non-conjugated
<b>Storage Buffer</b>	PBS with 0.02% sodium azide, 50% glycerol, pH7.3.
<b>Purification Method</b>	Antigen Affinity Purified
<b>Isotype</b>	IgG
<b>Clonality</b>	Polyclonal
<b>Alias</b>	1-acyl-sn-glycerol-3-phosphate acyltransferase alpha (EC 2.3.1.51) (1-acylglycerol-3-phosphate O-acyltransferase 1) (1-AGP acyltransferase 1) (1-AGPAT 1) (Lysophosphatidic acid acyltransferase alpha) (LPAAT-alpha) (Protein G15), AGPAT1, G15
<b>Immunogen Species</b>	Homo sapiens (Human)
<b>Research Area</b>	Signal Transduction
<b>Target Names</b>	AGPAT1

## Image



### Western blot

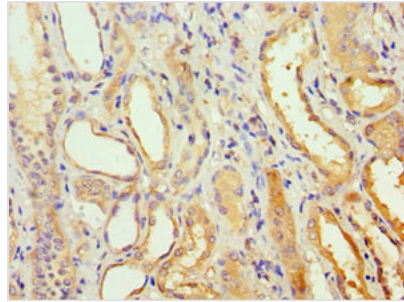
All lanes: AGPAT1 antibody at 6µg/ml + K562 whole cell lysate

### Secondary

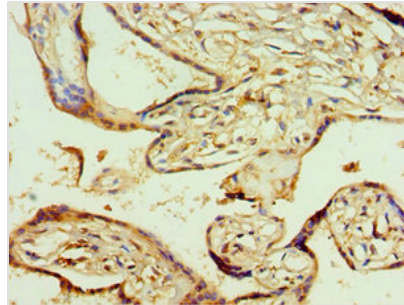
Goat polyclonal to rabbit IgG at 1/10000 dilution

Predicted band size: 32 kDa

Observed band size: 32 kDa



Immunohistochemistry of paraffin-embedded human kidney tissue using CSB-PA859948ESR1HU at dilution of 1:100



Immunohistochemistry of paraffin-embedded human placenta tissue using CSB-PA859948ESR1HU at dilution of 1:100

## Usage

For Research Use Only. Not for use in diagnostic or therapeutic procedures.