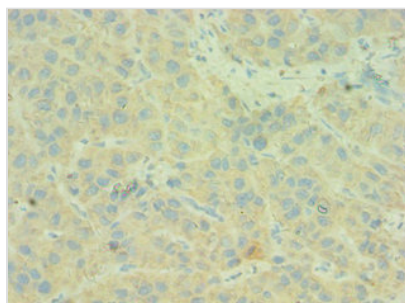




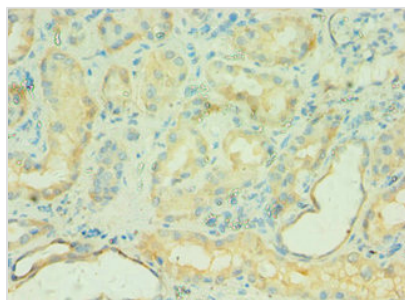
# C4BPB Antibody

<b>Product Code</b>	CSB-PA003954ESR2HU
<b>Storage</b>	Upon receipt, store at -20°C or -80°C. Avoid repeated freeze.
<b>Uniprot No.</b>	P20851
<b>Immunogen</b>	Recombinant Human C4b-binding protein beta chain protein (18-252AA)
<b>Raised In</b>	Rabbit
<b>Species Reactivity</b>	Human
<b>Tested Applications</b>	ELISA, IHC, IP; Recommended dilution: IHC:1:20-1:200, IP:1:200-1:2000
<b>Form</b>	Liquid
<b>Conjugate</b>	Non-conjugated
<b>Storage Buffer</b>	PBS with 0.02% sodium azide, 50% glycerol, pH7.3.
<b>Purification Method</b>	Antigen Affinity Purified
<b>Isotype</b>	IgG
<b>Clonality</b>	Polyclonal
<b>Alias</b>	C4b-binding protein beta chain, C4BPB
<b>Immunogen Species</b>	Homo sapiens (Human)
<b>Research Area</b>	Immunology
<b>Target Names</b>	C4BPB

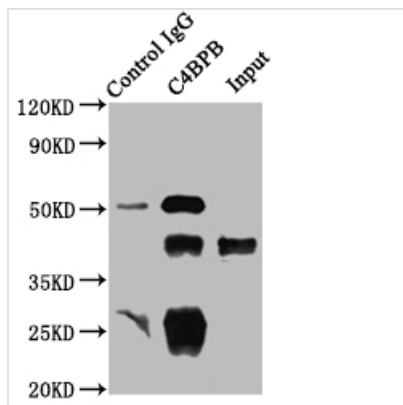
## Image



Immunohistochemistry of paraffin-embedded human liver cancer using CSB-PA003954ESR2HU at dilution of 1:100



Immunohistochemistry of paraffin-embedded human kidney tissue using CSB-PA003954ESR2HU at dilution of 1:100



Immunoprecipitating C4BPB in HepG2 whole cell lysate

Lane 1: Rabbit control IgG instead of CSB-PA003954ESR2HU in HepG2 whole cell lysate. For western blotting, a HRP-conjugated Protein G antibody was used as the secondary antibody (1/2000)

Lane 2: CSB-PA003954ESR2HU (8μg) + HepG2 whole cell lysate (500μg)

Lane 3: HepG2 whole cell lysate (10μg)

**Usage**

For Research Use Only. Not for use in diagnostic or therapeutic procedures.