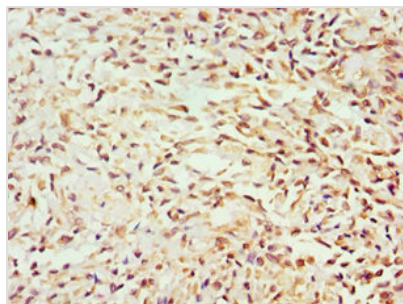




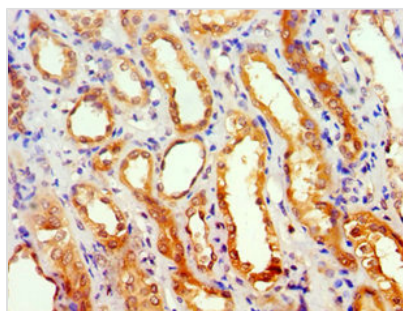
GEM Antibody

Product Code	CSB-PA009362ESR2HU
Storage	Upon receipt, store at -20°C or -80°C. Avoid repeated freeze.
Uniprot No.	P55040
Immunogen	Recombinant Human GTP-binding protein GEM protein (1-150AA)
Raised In	Rabbit
Species Reactivity	Human
Tested Applications	ELISA, IHC; Recommended dilution: IHC:1:20-1:200
Form	Liquid
Conjugate	Non-conjugated
Storage Buffer	PBS with 0.02% sodium azide, 50% glycerol, pH7.3.
Purification Method	Antigen Affinity Purified
Isotype	IgG
Clonality	Polyclonal
Alias	GTP-binding protein GEM (GTP-binding mitogen-induced T-cell protein) (RAS-like protein KIR), GEM, KIR
Immunogen Species	Homo sapiens (Human)
Research Area	Signal Transduction
Target Names	GEM

Image



Immunohistochemistry of paraffin-embedded human breast cancer using CSB-PA009362ESR2HU at dilution of 1:100



Immunohistochemistry of paraffin-embedded human kidney tissue using CSB-PA009362ESR2HU at dilution of 1:100

Usage

For Research Use Only. Not for use in diagnostic or therapeutic procedures.