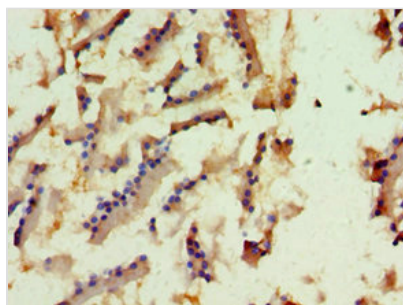




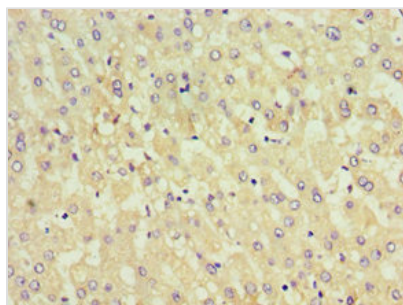
# KIF6 Antibody

|                            |   |
|----------------------------|---|
| <b>Product Code</b>        | CSB-PA754540ESR1HU  |
| <b>Storage</b>             | Upon receipt, store at -20°C or -80°C. Avoid repeated freeze.   |
| <b>Uniprot No.</b>         | Q6ZMV9  |
| <b>Immunogen</b>           | Recombinant Human Kinesin-like protein KIF6 protein (565-814AA) |
| <b>Raised In</b>           | Rabbit  |
| <b>Species Reactivity</b>  | Human   |
| <b>Tested Applications</b> | ELISA, IHC; Recommended dilution: IHC:1:20-1:200                |
| <b>Form</b>                | Liquid  |
| <b>Conjugate</b>           | Non-conjugated  |
| <b>Storage Buffer</b>      | PBS with 0.02% sodium azide, 50% glycerol, pH7.3.               |
| <b>Purification Method</b> | Antigen Affinity Purified                                       |
| <b>Isotype</b>             | IgG   |
| <b>Clonality</b>           | Polyclonal  |
| <b>Alias</b>               | Kinesin-like protein KIF6, KIF6, C6orf102                       |
| <b>Immunogen Species</b>   | Homo sapiens (Human)  |
| <b>Research Area</b>       | Signal Transduction   |
| <b>Target Names</b>        | KIF6  |

## Image



Immunohistochemistry of paraffin-embedded human prostate tissue using CSB-PA754540ESR1HU at dilution of 1:100



Immunohistochemistry of paraffin-embedded human liver tissue using CSB-PA754540ESR1HU at dilution of 1:100