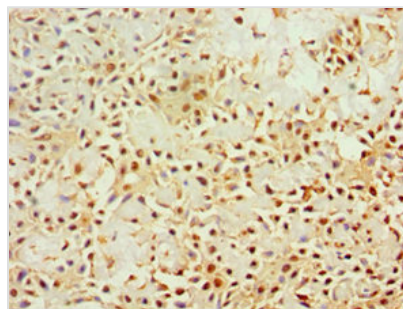




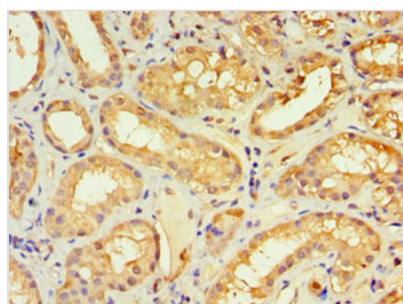
# KLRC1 Antibody

<b>Product Code</b>	CSB-PA012466ESR1HU
<b>Storage</b>	Upon receipt, store at -20°C or -80°C. Avoid repeated freeze.
<b>Uniprot No.</b>	P26715
<b>Immunogen</b>	Recombinant Human NKG2-A/NKG2-B type II integral membrane protein (114-233AA)
<b>Raised In</b>	Rabbit
<b>Species Reactivity</b>	Human
<b>Tested Applications</b>	ELISA, IHC; Recommended dilution: IHC:1:20-1:200
<b>Form</b>	Liquid
<b>Conjugate</b>	Non-conjugated
<b>Storage Buffer</b>	PBS with 0.02% sodium azide, 50% glycerol, pH7.3.
<b>Purification Method</b>	Antigen Affinity Purified
<b>Isotype</b>	IgG
<b>Clonality</b>	Polyclonal
<b>Alias</b>	NKG2-A/NKG2-B type II integral membrane protein (CD159 antigen-like family member A) (NK cell receptor A) (NKG2-A/B-activating NK receptor) (CD antigen CD159a), KLRC1, NKG2A
<b>Immunogen Species</b>	Homo sapiens (Human)
<b>Research Area</b>	Immunology
<b>Target Names</b>	KLRC1

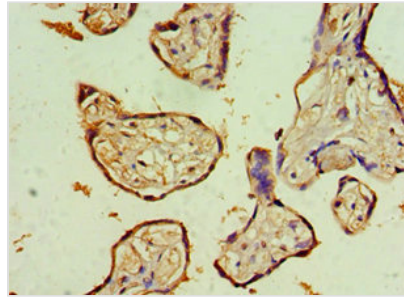
## Image



Immunohistochemistry of paraffin-embedded human breast cancer using CSB-PA012466ESR1HU at dilution of 1:100



Immunohistochemistry of paraffin-embedded human kidney tissue using CSB-PA012466ESR1HU at dilution of 1:100



Immunohistochemistry of paraffin-embedded human placenta tissue using CSB-PA012466ESR1HU at dilution of 1:100