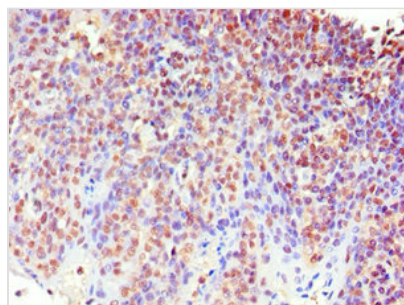




MECP2 Antibody

| | |
|----------------------------|--|
| Product Code | CSB-PA013638ESR2HU |
| Storage | Upon receipt, store at -20°C or -80°C. Avoid repeated freeze. |
| Uniprot No. | P51608 |
| Immunogen | Recombinant Human Methyl-CpG-binding protein 2 protein (1-280AA) |
| Raised In | Rabbit |
| Species Reactivity | Human |
| Tested Applications | ELISA, IHC; Recommended dilution: IHC:1:20-1:200 |
| Form | Liquid |
| Conjugate | Non-conjugated |
| Storage Buffer | PBS with 0.02% sodium azide, 50% glycerol, pH7.3. |
| Purification Method | Antigen Affinity Purified |
| Isotype | IgG |
| Clonality | Polyclonal |
| Alias | Methyl-CpG-binding protein 2 (MeCp-2 protein) (MeCp2), MECP2 |
| Immunogen Species | Homo sapiens (Human) |
| Research Area | Epigenetics and Nuclear Signaling |
| Target Names | MECP2 |

Image



Immunohistochemistry of paraffin-embedded human tonsil tissue using CSB-PA013638ESR2HU at dilution of 1:100

Usage

For Research Use Only. Not for use in diagnostic or therapeutic procedures.