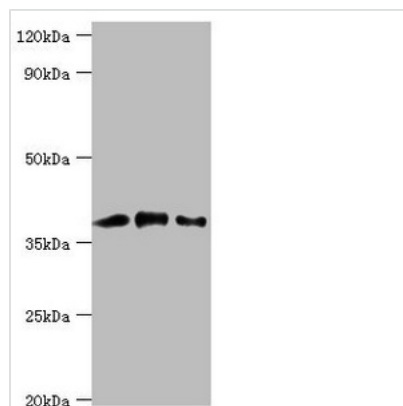




CAPG Antibody

Product Code	CSB-PA004489ESR2HU
Storage	Upon receipt, store at -20°C or -80°C. Avoid repeated freeze.
Uniprot No.	P40121
Immunogen	Recombinant Human Macrophage-capping protein (1-348AA)
Raised In	Rabbit
Species Reactivity	Human, Rat
Tested Applications	ELISA, WB; Recommended dilution: WB:1:500-1:2000
Form	Liquid
Conjugate	Non-conjugated
Storage Buffer	PBS with 0.02% sodium azide, 50% glycerol, pH7.3.
Purification Method	Antigen Affinity Purified
Isotype	IgG
Clonality	Polyclonal
Alias	Macrophage-capping protein (Actin regulatory protein CAP-G), CAPG, AFCP MCP
Immunogen Species	Homo sapiens (Human)
Research Area	Immunology
Target Names	CAPG

Image



Western blot
 All lanes: Macrophage-capping protein antibody at 1µg/ml
 Lane 1: HeLa whole cell lysate
 Lane 2: NIH/3T3 whole cell lysate
 Lane 3: Rat lung tissue
 Secondary
 Goat polyclonal to rabbit IgG at 1/10000 dilution
 Predicted band size: 39, 37 kDa
 Observed band size: 39 kDa

Usage

For Research Use Only. Not for use in diagnostic or therapeutic procedures.