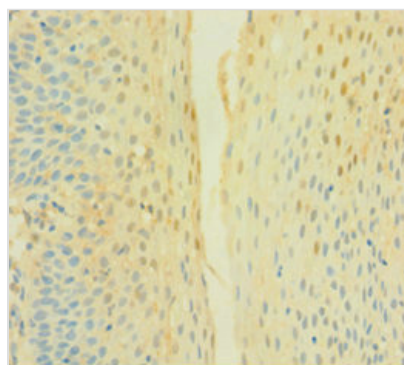




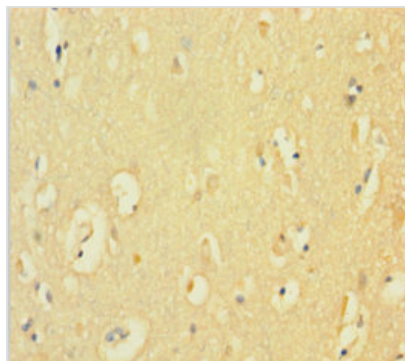
CYBB Antibody

| | |
|----------------------------|---|
| Product Code | CSB-PA006325LA01HU |
| Storage | Upon receipt, store at -20°C or -80°C. Avoid repeated freeze. |
| Uniprot No. | P04839 |
| Immunogen | Recombinant Human Cytochrome b-245 heavy chain protein (283-570AA) |
| Raised In | Rabbit |
| Species Reactivity | Human |
| Tested Applications | ELISA, IHC, IF; Recommended dilution: IHC:1:20-1:200, IF:1:50-1:200 |
| Form | Liquid |
| Conjugate | Non-conjugated |
| Storage Buffer | Preservative: 0.03% Proclin 300 Constituents: 50% Glycerol, 0.01M PBS, PH 7.4 |
| Purification Method | >95%, Protein G purified |
| Isotype | IgG |
| Clonality | Polyclonal |
| Alias | Cytochrome b-245 heavy chain (EC 1.-.-.-) (CGD91-phox) (Cytochrome b(558) subunit beta) (Cytochrome b558 subunit beta) (Heme-binding membrane glycoprotein gp91phox) (NADPH oxidase 2) (Neutrophil cytochrome b 91 kDa polypeptide) (Superoxide-generating NADPH oxidase heavy chain subunit) (gp91-1) (gp91-phox) (p22 phagocyte B-cytochrome), CYBB, NOX2 |
| Immunogen Species | Homo sapiens (Human) |
| Research Area | Immunology |
| Target Names | CYBB |

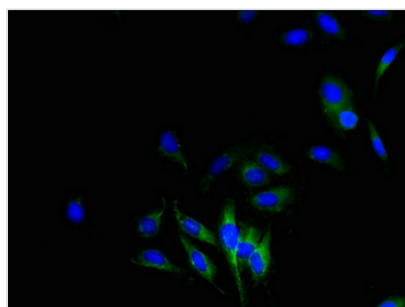
Image



Immunohistochemistry of paraffin-embedded human tonsil tissue using CSB-PA006325LA01HU at dilution of 1:100



Immunohistochemistry of paraffin-embedded human brain tissue using CSB-PA006325LA01HU at dilution of 1:100



Immunofluorescent analysis of HeLa cells using CSB-PA006325LA01HU at dilution of 1:100 and Alexa Fluor 488-conjugated AffiniPure Goat Anti-Rabbit IgG(H+L)

Usage

For Research Use Only. Not for use in diagnostic or therapeutic procedures.