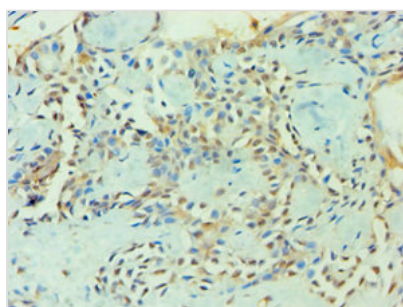




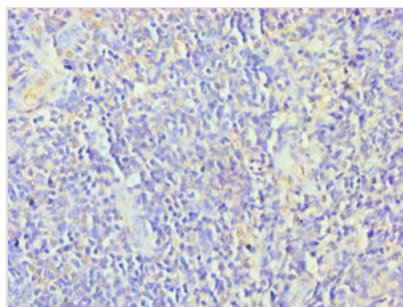
# ZNF346 Antibody

<b>Product Code</b>	CSB-PA026691ESR1HU
<b>Storage</b>	Upon receipt, store at -20°C or -80°C. Avoid repeated freeze.
<b>Uniprot No.</b>	Q9UL40
<b>Immunogen</b>	Recombinant Human Zinc finger protein 346 protein (1-294AA)
<b>Raised In</b>	Rabbit
<b>Species Reactivity</b>	Human
<b>Tested Applications</b>	ELISA, IHC, IP; Recommended dilution: IHC:1:20-1:200, IP:1:200-1:2000
<b>Form</b>	Liquid
<b>Conjugate</b>	Non-conjugated
<b>Storage Buffer</b>	PBS with 0.02% sodium azide, 50% glycerol, pH7.3.
<b>Purification Method</b>	Antigen Affinity Purified
<b>Isotype</b>	IgG
<b>Clonality</b>	Polyclonal
<b>Alias</b>	Zinc finger protein 346 (Just another zinc finger protein), ZNF346, JAZ
<b>Immunogen Species</b>	Homo sapiens (Human)
<b>Research Area</b>	Epigenetics and Nuclear Signaling
<b>Target Names</b>	ZNF346

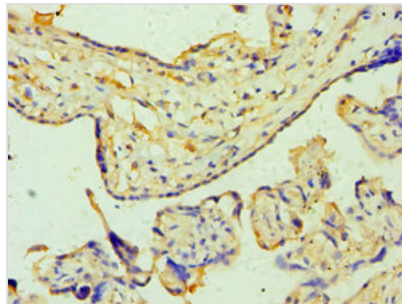
## Image



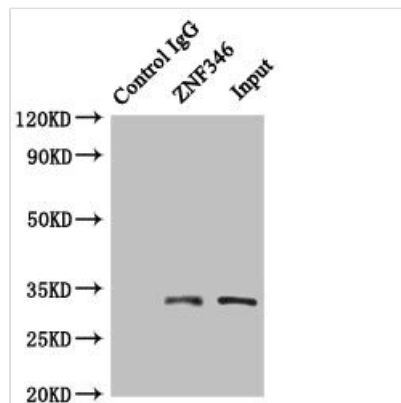
Immunohistochemistry of paraffin-embedded human breast cancer using CSB-PA026691ESR1HU at dilution of 1:100



Immunohistochemistry of paraffin-embedded human tonsil tissue using CSB-PA026691ESR1HU at dilution of 1:100



Immunohistochemistry of paraffin-embedded human placenta tissue using CSB-PA026691ESR1HU at dilution of 1:100



Immunoprecipitating ZNF346 in HepG2 whole cell lysate

Lane 1: Rabbit control IgG (1 $\mu$ g) instead of CSB-PA026691ESR1HU in HepG2 whole cell lysate. For western blotting, a HRP-conjugated anti-rabbit IgG, specific to the non-reduced form of IgG was used as the secondary antibody (1/50000)

Lane 2: CSB-PA026691ESR1HU (4 $\mu$ g) + HepG2 whole cell lysate (500 $\mu$ g)

Lane 3: HepG2 whole cell lysate (20 $\mu$ g)