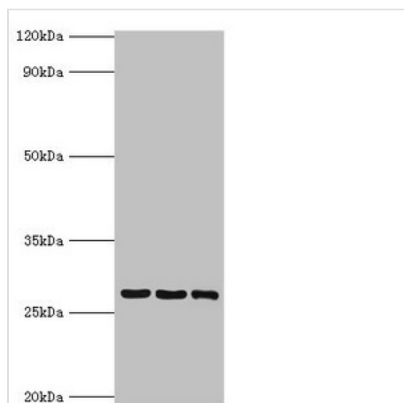




YWHAQ Antibody

Product Code	CSB-PA026290ESR1HU
Storage	Upon receipt, store at -20°C or -80°C. Avoid repeated freeze.
Uniprot No.	P27348
Immunogen	Recombinant Human 14-3-3 protein theta protein (1-245AA)
Raised In	Rabbit
Species Reactivity	Human, Mouse
Tested Applications	ELISA, WB, IHC, IF; Recommended dilution: WB:1:200-1:1000, IHC:1:20-1:500, IF:1:50-1:200
Form	Liquid
Conjugate	Non-conjugated
Storage Buffer	PBS with 0.02% sodium azide, 50% glycerol, pH7.3.
Purification Method	Antigen Affinity Purified
Isotype	IgG
Clonality	Polyclonal
Alias	14-3-3 protein theta (14-3-3 protein T-cell) (14-3-3 protein tau) (Protein HS1), YWHAQ
Immunogen Species	Homo sapiens (Human)
Research Area	Neuroscience
Target Names	YWHAQ

Image



Western blot

All lanes: 14-3-3 protein theta antibody at 4µg/ml

Lane 1: A549 whole cell lysate

Lane 2: Mouse lung tissue

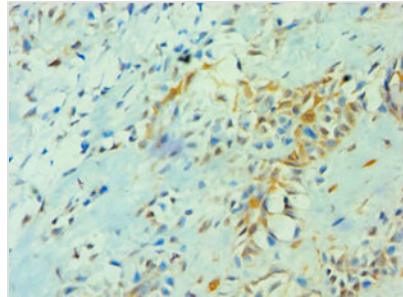
Lane 3: HepG2 whole cell lysate

Secondary

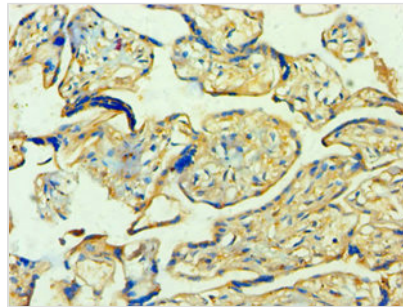
Goat polyclonal to rabbit IgG at 1/10000 dilution

Predicted band size: 28 kDa

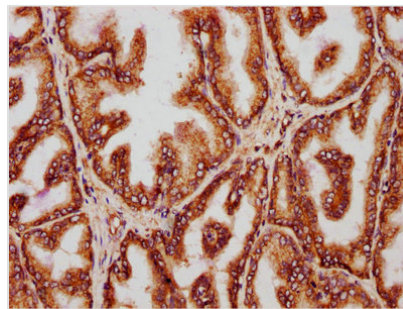
Observed band size: 28 kDa



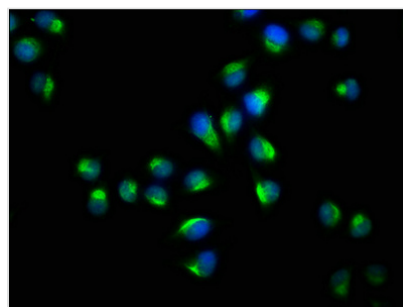
Immunohistochemistry of paraffin-embedded human breast cancer using CSB-PA026290ESR1HU at dilution of 1:100



Immunohistochemistry of paraffin-embedded human placenta tissue using CSB-PA026290ESR1HU at dilution of 1:100



IHC image of CSB-PA026290ESR1HU diluted at 1:221 and staining in paraffin-embedded human prostate tissue performed on a Leica Bond™ system. After dewaxing and hydration, antigen retrieval was mediated by high pressure in a citrate buffer (pH 6.0). Section was blocked with 10% normal goat serum 30min at RT. Then primary antibody (1% BSA) was incubated at 4°C overnight. The primary is detected by a biotinylated secondary antibody and visualized using an HRP conjugated SP system.



Immunofluorescence staining of HeLa cells with CSB-PA026290ESR1HU at 1:73, counter-stained with DAPI. The cells were fixed in 4% formaldehyde, permeabilized using 0.2% Triton X-100 and blocked in 10% normal Goat Serum. The cells were then incubated with the antibody overnight at 4°C. The secondary antibody was Alexa Fluor 488-conjugated AffiniPure Goat Anti-Rabbit IgG(H+L).

Usage

For Research Use Only. Not for use in diagnostic or therapeutic procedures.