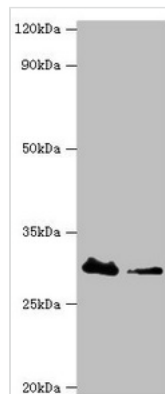




CBR3 Antibody

Product Code	CSB-PA004587ESR1HU
Storage	Upon receipt, store at -20°C or -80°C. Avoid repeated freeze.
Uniprot No.	O75828
Immunogen	Recombinant Human Carbonyl reductase [NADPH] 3 protein (118-277AA)
Raised In	Rabbit
Species Reactivity	Human
Tested Applications	ELISA, WB, IHC; Recommended dilution: WB:1:500-1:2000, IHC:1:20-1:200
Form	Liquid
Conjugate	Non-conjugated
Storage Buffer	PBS with 0.02% sodium azide, 50% glycerol, pH7.3.
Purification Method	Antigen Affinity Purified
Isotype	IgG
Clonality	Polyclonal
Alias	Carbonyl reductase [NADPH] 3 (EC 1.1.1.184) (NADPH-dependent carbonyl reductase 3) (Short chain dehydrogenase/reductase family 21C member 2), CBR3
Immunogen Species	Homo sapiens (Human)
Research Area	Signal Transduction
Target Names	CBR3

Image



Western blot

All lanes: Carbonyl reductase [NADPH] 3 antibody at 10μg/ml

Lane 1: Hela whole cell lysate

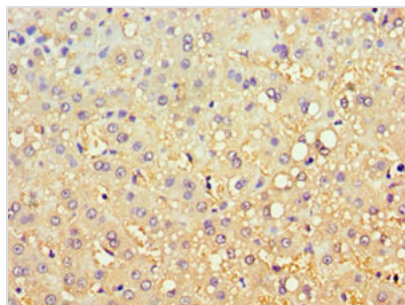
Lane 2: K562 whole cell lysate

Secondary

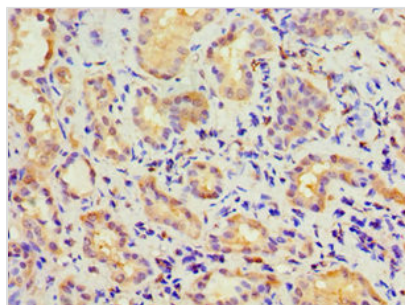
Goat polyclonal to rabbit IgG at 1/10000 dilution

Predicted band size: 31 kDa

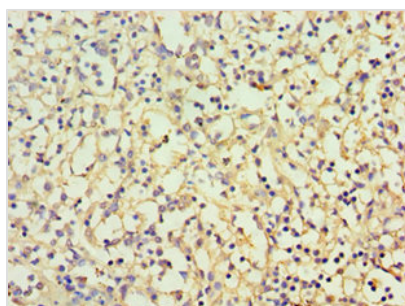
Observed band size: 31 kDa



Immunohistochemistry of paraffin-embedded human liver tissue using CSB-PA004587ESR1HU at dilution of 1:100



Immunohistochemistry of paraffin-embedded human kidney tissue using CSB-PA004587ESR1HU at dilution of 1:100



Immunohistochemistry of paraffin-embedded human spleen tissue using CSB-PA004587ESR1HU at dilution of 1:100