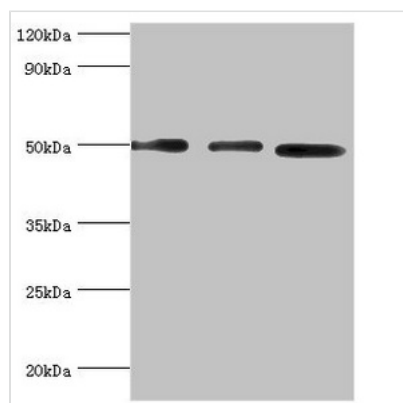




# ADSS Antibody

<b>Product Code</b>	CSB-PA001398ESR1HU
<b>Storage</b>	Upon receipt, store at -20°C or -80°C. Avoid repeated freeze.
<b>Uniprot No.</b>	P30520
<b>Immunogen</b>	Recombinant Human Adenylosuccinate synthetase isozyme 2 protein (1-280AA)
<b>Raised In</b>	Rabbit
<b>Species Reactivity</b>	Human, Mouse
<b>Tested Applications</b>	ELISA, WB, IHC; Recommended dilution: WB:1:500-1:2000, IHC:1:20-1:200
<b>Form</b>	Liquid
<b>Conjugate</b>	Non-conjugated
<b>Storage Buffer</b>	PBS with 0.02% sodium azide, 50% glycerol, pH7.3.
<b>Purification Method</b>	Antigen Affinity Purified
<b>Isotype</b>	IgG
<b>Clonality</b>	Polyclonal
<b>Alias</b>	Adenylosuccinate synthetase isozyme 2 (AMPSase 2) (AdSS 2) (EC 6.3.4.4) (Adenylosuccinate synthetase, acidic isozyme) (Adenylosuccinate synthetase, liver isozyme) (L-type adenylosuccinate synthetase) (IMP--aspartate ligase 2), ADSS, ADSS2
<b>Immunogen Species</b>	Homo sapiens (Human)
<b>Research Area</b>	Epigenetics and Nuclear Signaling
<b>Target Names</b>	ADSS

## Image



### Western blot

All lanes: Adenylosuccinate synthetase isozyme 2 antibody at 12µg/ml

Lane 1: Mouse skeletal muscle tissue

Lane 2: HepG2 whole cell lysate

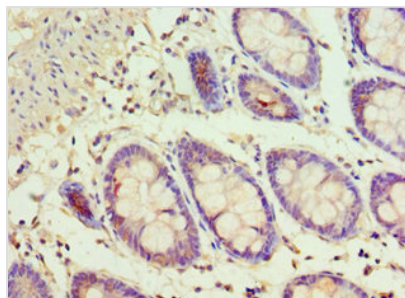
Lane 3: K562 whole cell lysate

Secondary

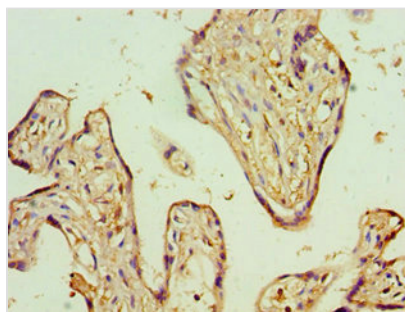
Goat polyclonal to rabbit IgG at 1/10000 dilution

Predicted band size: 50 kDa

Observed band size: 50 kDa



Immunohistochemistry of paraffin-embedded human colon tissue using CSB-PA001398ESR1HU at dilution of 1:100



Immunohistochemistry of paraffin-embedded human placenta tissue using CSB-PA001398ESR1HU at dilution of 1:100

## Usage

For Research Use Only. Not for use in diagnostic or therapeutic procedures.