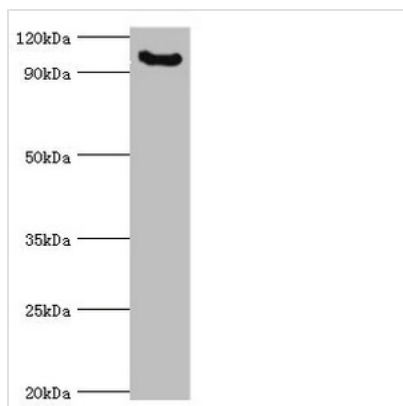




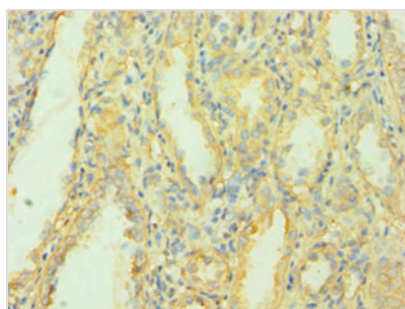
MCPH1 Antibody

Product Code	CSB-PA839866DSR1HU
Storage	Upon receipt, store at -20°C or -80°C. Avoid repeated freeze.
Uniprot No.	Q8NEM0
Immunogen	Recombinant Human Microcephalin protein (536-835AA)
Raised In	Rabbit
Species Reactivity	Human
Tested Applications	ELISA, WB, IHC, IF; Recommended dilution: WB:1:500-1:2000, IHC:1:20-1:200, IF:1:50-1:200
Form	Liquid
Conjugate	Non-conjugated
Storage Buffer	PBS with 0.02% sodium azide, 50% glycerol, pH7.3.
Purification Method	Antigen Affinity Purified
Isotype	IgG
Clonality	Polyclonal
Alias	Microcephalin, MCPH1
Immunogen Species	Homo sapiens (Human)
Research Area	Epigenetics and Nuclear Signaling
Target Names	MCPH1

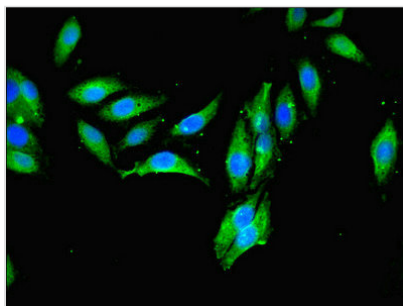
Image



Western blot
 All lanes: Microcephalin antibody at 3µg/ml +
 Mouse liver tissue
 Secondary
 Goat polyclonal to rabbit IgG at 1/10000 dilution
 Predicted band size: 93, 63, 68 kDa
 Observed band size: 93 kDa



Immunohistochemistry of paraffin-embedded
 human kidney tissue using CSB-
 PA839866DSR1HU at dilution of 1:100



Immunofluorescent analysis of HeLa cells using CSB-PA839866DSR1HU at dilution of 1:100 and Alexa Fluor 488-conjugated AffiniPure Goat Anti-Rabbit IgG(H+L)