



MTMR14 Antibody

Product Code	CSB-PA847682ESR2HU
Storage	Upon receipt, store at -20°C or -80°C. Avoid repeated freeze.
Uniprot No.	Q8NCE2
Immunogen	Recombinant Human Myotubularin-related protein 14 protein (1-280AA)
Raised In	Rabbit
Species Reactivity	Human, Mouse
Tested Applications	ELISA, WB, IHC; Recommended dilution: WB:1:500-1:2000, IHC:1:20-1:200
Form	Liquid
Conjugate	Non-conjugated
Storage Buffer	PBS with 0.02% sodium azide, 50% glycerol, pH7.3.
Purification Method	Antigen Affinity Purified
Isotype	IgG
Clonality	Polyclonal
Alias	Myotubularin-related protein 14 (EC 3.1.3.-) (HCV NS5A-transactivated protein 4 splice variant A-binding protein 1) (NS5ATP4ABP1) (hJumpy), MTMR14, C3orf29
Immunogen Species	Homo sapiens (Human)
Research Area	Microbiology
Target Names	MTMR14

Image



Western blot

All lanes: Myotubularin-related protein 14 antibody at 10μg/ml

Lane 1: Hela whole cell lysate

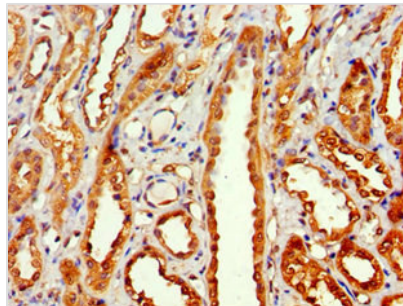
Lane 2: Mouse skeletal muscle tissue

Secondary

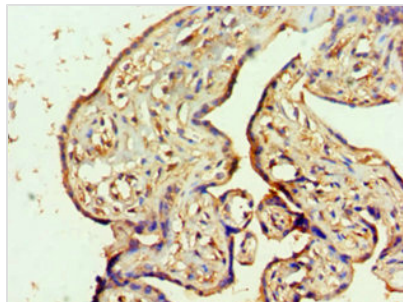
Goat polyclonal to rabbit IgG at 1/10000 dilution

Predicted band size: 73, 67, 61 kDa

Observed band size: 73 kDa



Immunohistochemistry of paraffin-embedded human kidney tissue using CSB-PA847682ESR2HU at dilution of 1:100



Immunohistochemistry of paraffin-embedded human placenta tissue using CSB-PA847682ESR2HU at dilution of 1:100