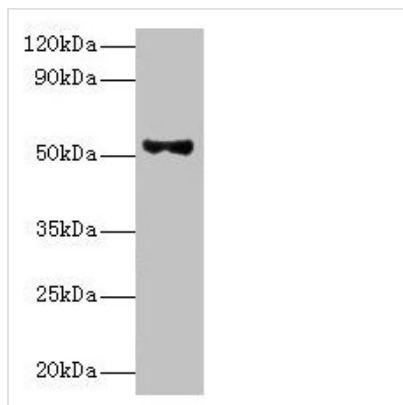




PNPLA3 Antibody

Product Code	CSB-PA889106ESR1HU
Storage	Upon receipt, store at -20°C or -80°C. Avoid repeated freeze.
Uniprot No.	Q9NST1
Immunogen	Recombinant Human Patatin-like phospholipase domain-containing protein 3 protein (377-481AA)
Raised In	Rabbit
Species Reactivity	Human
Tested Applications	ELISA, WB, IHC; Recommended dilution: WB:1:200-1:1000, IHC:1:20-1:200
Form	Liquid
Conjugate	Non-conjugated
Storage Buffer	PBS with 0.02% sodium azide, 50% glycerol, pH7.3.
Purification Method	Antigen Affinity Purified
Isotype	IgG
Clonality	Polyclonal
Alias	Patatin-like phospholipase domain-containing protein 3 (EC 3.1.1.3) (Acylglycerol O-acyltransferase) (EC 2.3.1.-) (Adiponutrin) (Calcium-independent phospholipase A2-epsilon) (iPLA2-epsilon), PNPLA3, ADPN C22orf20
Immunogen Species	Homo sapiens (Human)
Research Area	Cardiovascular
Target Names	PNPLA3

Image



Western blot

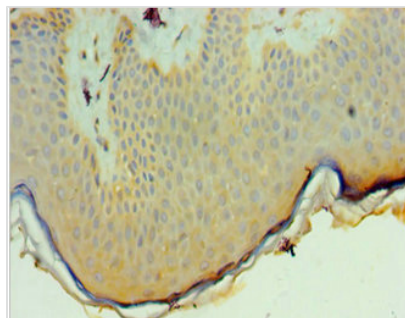
All lanes: Patatin-like phospholipase domain-containing protein 3 antibody at 8µg/ml + HepG2 whole cell lysate

Secondary

Goat polyclonal to rabbit IgG at 1/10000 dilution

Predicted band size: 53 kDa

Observed band size: 53 kDa



Immunohistochemistry of paraffin-embedded human skin tissue using CSB-PA889106ESR1HU at dilution of 1:100

Usage

For Research Use Only. Not for use in diagnostic or therapeutic procedures.