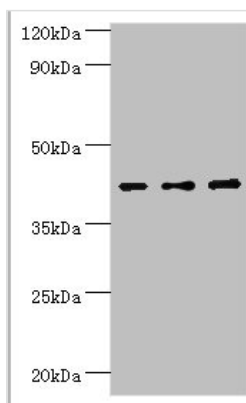




SERPINB1 Antibody

Product Code	CSB-PA021065ESR2HU
Storage	Upon receipt, store at -20°C or -80°C. Avoid repeated freeze.
Uniprot No.	P30740
Immunogen	Recombinant Human Leukocyte elastase inhibitor protein (100-379AA)
Raised In	Rabbit
Species Reactivity	Human
Tested Applications	ELISA, WB, IHC; Recommended dilution: WB:1:500-1:2000, IHC:1:20-1:200
Form	Liquid
Conjugate	Non-conjugated
Storage Buffer	PBS with 0.02% sodium azide, 50% glycerol, pH7.3.
Purification Method	Antigen Affinity Purified
Isotype	IgG
Clonality	Polyclonal
Alias	Leukocyte elastase inhibitor (LEI) (Monocyte/neutrophil elastase inhibitor) (EI) (M/NEI) (Peptidase inhibitor 2) (PI-2) (Serpine B1), SERPINB1, ELANH2 MNEI PI2
Immunogen Species	Homo sapiens (Human)
Research Area	Cardiovascular
Target Names	SERPINB1

Image



Western blot

All lanes: Leukocyte elastase inhibitor antibody at 4µg/ml

Lane 1: MCF-7 whole cell lysate

Lane 2: HeLa whole cell lysate

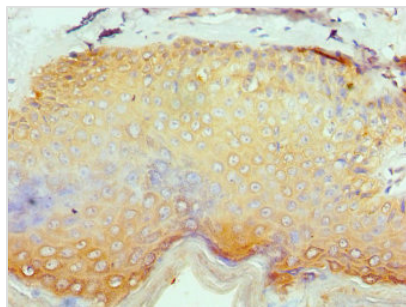
Lane 3: HepG2 whole cell lysate

Secondary

Goat polyclonal to rabbit IgG at 1/10000 dilution

Predicted band size: 43, 27 kDa

Observed band size: 43 kDa



Immunohistochemistry of paraffin-embedded human skin tissue using CSB-PA021065ESR2HU at dilution of 1:100

Usage

For Research Use Only. Not for use in diagnostic or therapeutic procedures.