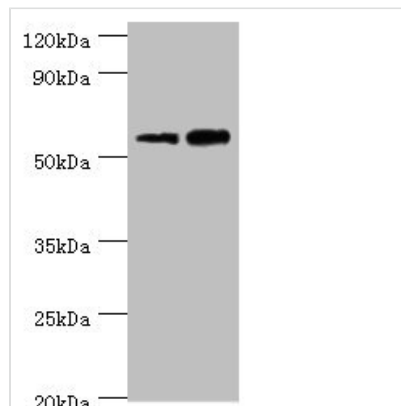




GSDME Antibody

Product Code	CSB-PA006766ESR1HU
Storage	Upon receipt, store at -20°C or -80°C. Avoid repeated freeze.
Uniprot No.	O60443
Immunogen	Recombinant Human Gasdermin-E protein (1-260AA)
Raised In	Rabbit
Species Reactivity	Human
Tested Applications	ELISA, WB, IHC; Recommended dilution: WB:1:500-1:2000, IHC:1:20-1:200
Form	Liquid
Conjugate	Non-conjugated
Storage Buffer	PBS with 0.02% sodium azide, 50% glycerol, pH7.3.
Purification Method	Antigen Affinity Purified
Isotype	IgG
Clonality	Polyclonal
Alias	Gasdermin-E (Inversely correlated with estrogen receptor expression 1) (ICERE-1) (Non-syndromic hearing impairment protein 5) [Cleaved into: Gasdermin-E, N-terminal (GSDME-NT); Gasdermin-E, C-terminal (GSDME-CT)], GSDME, DFNA5 ICERE1
Immunogen Species	Homo sapiens (Human)
Research Area	Neuroscience
Target Names	GSDME

Image



Western blot

All lanes: Non-syndromic hearing impairment protein 5 antibody at 10µg/ml

Lane 1: Hela whole cell lysate

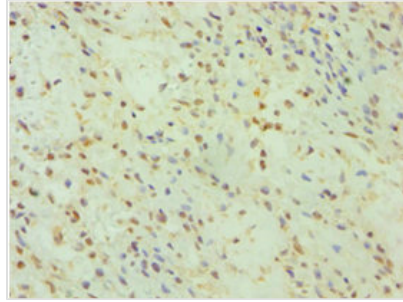
Lane 2: HepG2 whole cell lysate

Secondary

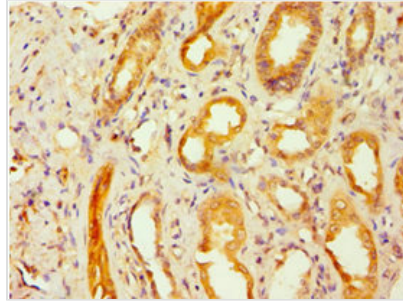
Goat polyclonal to rabbit IgG at 1/10000 dilution

Predicted band size: 55, 11, 37 kDa

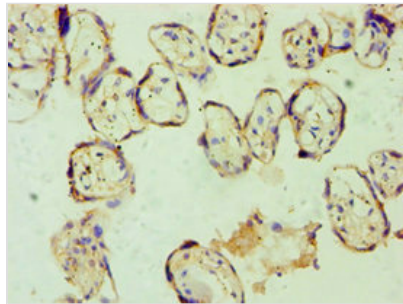
Observed band size: 55 kDa



Immunohistochemistry of paraffin-embedded human breast cancer using CSB-PA006766ESR1HU at dilution of 1:100



Immunohistochemistry of paraffin-embedded human kidney tissue using CSB-PA006766ESR1HU at dilution of 1:100



Immunohistochemistry of paraffin-embedded human placenta tissue using CSB-PA006766ESR1HU at dilution of 1:100

Usage

For Research Use Only. Not for use in diagnostic or therapeutic procedures.