



SHMT1 Antibody

| | |
|----------------------------|---|
| Product Code | CSB-PA021272ESR1HU |
| Storage | Upon receipt, store at -20°C or -80°C. Avoid repeated freeze. |
| Uniprot No. | P34896 |
| Immunogen | Recombinant Human Serine hydroxymethyltransferase, cytosolic protein (324-483AA) |
| Raised In | Rabbit |
| Species Reactivity | Human |
| Tested Applications | ELISA, WB, IHC; Recommended dilution: WB:1:500-1:2000, IHC:1:20-1:200 |
| Form | Liquid |
| Conjugate | Non-conjugated |
| Storage Buffer | PBS with 0.02% sodium azide, 50% glycerol, pH7.3. |
| Purification Method | Antigen Affinity Purified |
| Isotype | IgG |
| Clonality | Polyclonal |
| Alias | Serine hydroxymethyltransferase, cytosolic (SHMT) (EC 2.1.2.1) (Glycine hydroxymethyltransferase) (Serine methylase), SHMT1 |
| Immunogen Species | Homo sapiens (Human) |
| Research Area | Signal Transduction |
| Target Names | SHMT1 |

Image



Western blot

All lanes: SHMT1 antibody at 7µg/ml

Lane 1: Hela whole cell lysate

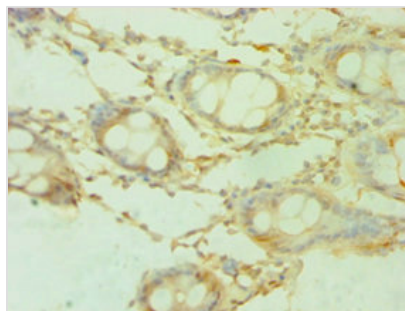
Lane 2: HepG2 whole cell lysate

Secondary

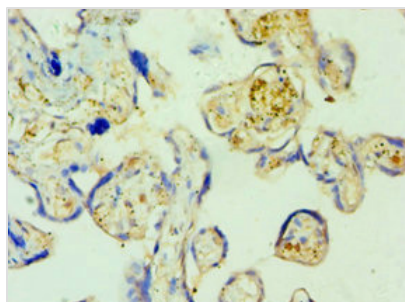
Goat polyclonal to rabbit IgG at 1/10000 dilution

Predicted band size: 54, 50, 45, 38 kDa

Observed band size: 54 kDa



Immunohistochemistry of paraffin-embedded human colon tissue using CSB-PA021272ESR1HU at dilution of 1:100



Immunohistochemistry of paraffin-embedded human placenta tissue using CSB-PA021272ESR1HU at dilution of 1:100