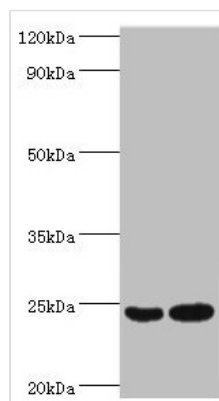




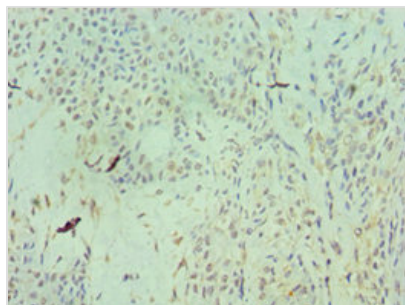
# RAN Antibody

<b>Product Code</b>	CSB-PA019307ESR1HU
<b>Storage</b>	Upon receipt, store at -20°C or -80°C. Avoid repeated freeze.
<b>Uniprot No.</b>	P62826
<b>Immunogen</b>	Recombinant Human GTP-binding nuclear protein Ran protein (1-216AA)
<b>Raised In</b>	Rabbit
<b>Species Reactivity</b>	Human
<b>Tested Applications</b>	ELISA, WB, IHC; Recommended dilution: WB:1:500-1:5000, IHC:1:20-1:200
<b>Form</b>	Liquid
<b>Conjugate</b>	Non-conjugated
<b>Storage Buffer</b>	PBS with 0.02% sodium azide, 50% glycerol, pH7.3.
<b>Purification Method</b>	Antigen Affinity Purified
<b>Isotype</b>	IgG
<b>Clonality</b>	Polyclonal
<b>Alias</b>	GTP-binding nuclear protein Ran (Androgen receptor-associated protein 24) (GTPase Ran) (Ras-like protein TC4) (Ras-related nuclear protein), RAN, ARA24
<b>Immunogen Species</b>	Homo sapiens (Human)
<b>Research Area</b>	Others
<b>Target Names</b>	RAN

## Image



Western blot  
 All lanes: RAN antibody at 2µg/ml  
 Lane 1: Hela whole cell lysate  
 Lane 2: Jurkat whole cell lysate  
 Secondary  
 Goat polyclonal to rabbit IgG at 1/10000 dilution  
 Predicted band size: 24 kDa  
 Observed band size: 24 kDa



Immunohistochemistry of paraffin-embedded human breast cancer using CSB-PA019307ESR1HU at dilution of 1:100