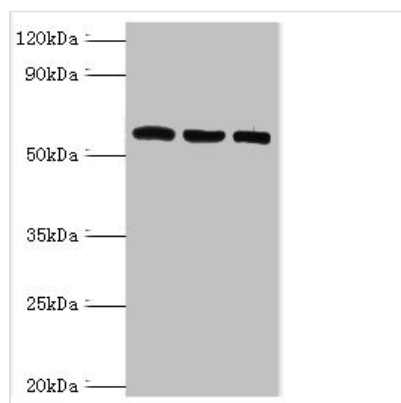




TXNRD2 Antibody

| | |
|----------------------------|--|
| Product Code | CSB-PA885675ESR2HU |
| Storage | Upon receipt, store at -20°C or -80°C. Avoid repeated freeze. |
| Uniprot No. | Q9NNW7 |
| Immunogen | Recombinant Human Thioredoxin reductase 2, mitochondrial protein (100-310AA) |
| Raised In | Rabbit |
| Species Reactivity | Human, Mouse |
| Tested Applications | ELISA, WB, IHC; Recommended dilution: WB:1:200-1:1000, IHC:1:20-1:200 |
| Form | Liquid |
| Conjugate | Non-conjugated |
| Storage Buffer | PBS with 0.02% sodium azide, 50% glycerol, pH7.3. |
| Purification Method | Antigen Affinity Purified |
| Isotype | IgG |
| Clonality | Polyclonal |
| Alias | Thioredoxin reductase 2, mitochondrial (EC 1.8.1.9) (Selenoprotein Z) (SelZ) (TR-beta) (Thioredoxin reductase TR3), TXNRD2, KIAA1652 TRXR2 |
| Immunogen Species | Homo sapiens (Human) |
| Research Area | Cell Biology |
| Target Names | TXNRD2 |

Image



Western blot

All lanes: Thioredoxin reductase 2, mitochondrial antibody at 6µg/ml

Lane 1: Mouse liver tissue

Lane 2: Mouse gonad tissue

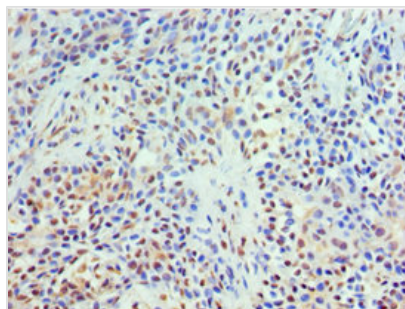
Lane 3: Hela whole cell lysate

Secondary

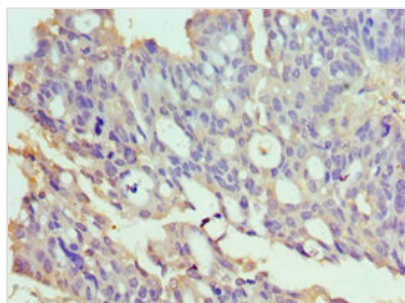
Goat polyclonal to rabbit IgG at 1/10000 dilution

Predicted band size: 57, 54, 47, 31 kDa

Observed band size: 57 kDa



Immunohistochemistry of paraffin-embedded human breast cancer using CSB-PA885675ESR2HU at dilution of 1:100



Immunohistochemistry of paraffin-embedded human endometrial cancer using CSB-PA885675ESR2HU at dilution of 1:100

Usage

For Research Use Only. Not for use in diagnostic or therapeutic procedures.