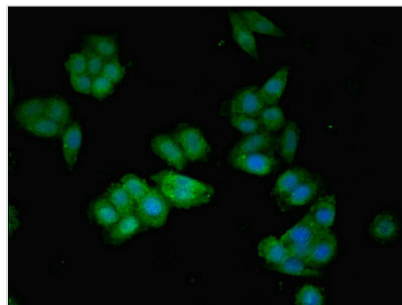




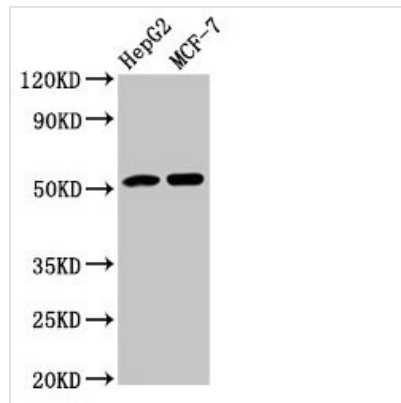
# AGT Antibody

<b>Product Code</b>	CSB-PA10079A0Rb
<b>Storage</b>	Upon receipt, store at -20°C or -80°C. Avoid repeated freeze.
<b>Uniprot No.</b>	P01019
<b>Immunogen</b>	Recombinant Human Angiotensinogen protein (44-427AA)
<b>Raised In</b>	Rabbit
<b>Species Reactivity</b>	Human
<b>Tested Applications</b>	ELISA, WB, IHC, IF; Recommended dilution: WB:1:500-1:5000, IHC:1:200-1:500, IF:1:50-1:200
<b>Form</b>	Liquid
<b>Conjugate</b>	Non-conjugated
<b>Storage Buffer</b>	Preservative: 0.03% Proclin 300 Constituents: 50% Glycerol, 0.01M PBS, PH 7.4
<b>Purification Method</b>	>95%, Protein G purified
<b>Isotype</b>	IgG
<b>Clonality</b>	Polyclonal
<b>Alias</b>	Angiotensinogen (Serpina8) [Cleaved into: Angiotensin-1 (Angiotensin 1-10) (Angiotensin I) (Ang I); Angiotensin-2 (Angiotensin 1-8) (Angiotensin II) (Ang II); Angiotensin-3 (Angiotensin 2-8) (Angiotensin III) (Ang III) (Des-Asp[1]-angiotensin II); Angiotensin-4 (Angiotensin 3-8) (Angiotensin IV) (Ang IV); Angiotensin 1-9; Angiotensin 1-7; Angiotensin 1-5; Angiotensin 1-4], AGT, SERPINA8
<b>Immunogen Species</b>	Homo sapiens (Human)
<b>Research Area</b>	Cardiovascular
<b>Target Names</b>	AGT

## Image



Immunofluorescent analysis of HepG2 cells using CSB-PA10079A0Rb at dilution of 1:100 and Alexa Fluor 488-conjugated AffiniPure Goat Anti-Rabbit IgG(H+L)



#### Western Blot

Positive WB detected in: HepG2 whole cell lysate, MCF-7 whole cell lysate

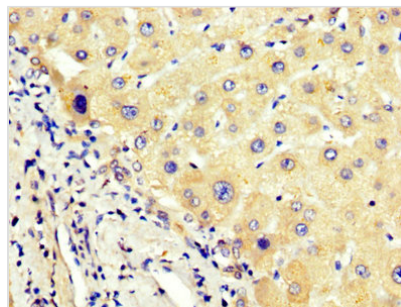
All lanes: AGT antibody at 3.9µg/ml

#### Secondary

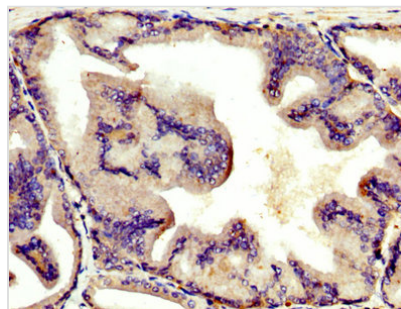
Goat polyclonal to rabbit IgG at 1/50000 dilution

Predicted band size: 54 kDa

Observed band size: 54 kDa



IHC image of CSB-PA10079A0Rb diluted at 1:400 and staining in paraffin-embedded human liver tissue performed on a Leica Bond<sup>TM</sup> system. After dewaxing and hydration, antigen retrieval was mediated by high pressure in a citrate buffer (pH 6.0). Section was blocked with 10% normal goat serum 30min at RT. Then primary antibody (1% BSA) was incubated at 4°C overnight. The primary is detected by a biotinylated secondary antibody and visualized using an HRP conjugated SP system.



IHC image of CSB-PA10079A0Rb diluted at 1:400 and staining in paraffin-embedded human prostate tissue performed on a Leica Bond<sup>TM</sup> system. After dewaxing and hydration, antigen retrieval was mediated by high pressure in a citrate buffer (pH 6.0). Section was blocked with 10% normal goat serum 30min at RT. Then primary antibody (1% BSA) was incubated at 4°C overnight. The primary is detected by a biotinylated secondary antibody and visualized using an HRP conjugated SP system.