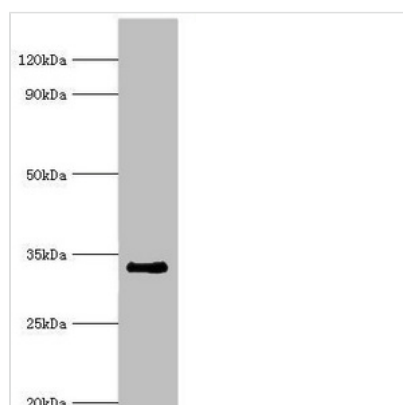




RAD1 Antibody

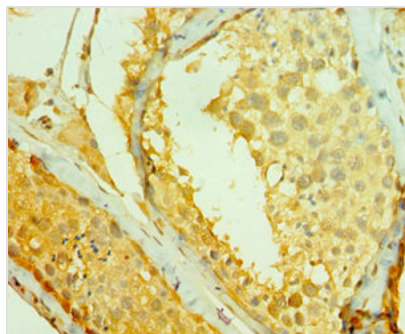
Product Code	CSB-PA019252ESR1HU
Storage	Upon receipt, store at -20°C or -80°C. Avoid repeated freeze.
Uniprot No.	O60671
Immunogen	Recombinant Human Cell cycle checkpoint protein RAD1 protein (1-282AA)
Raised In	Rabbit
Species Reactivity	Human
Tested Applications	ELISA, WB, IHC; Recommended dilution: WB:1:200-1:1000, IHC:1:20-1:200
Form	Liquid
Conjugate	Non-conjugated
Storage Buffer	PBS with 0.02% sodium azide, 50% glycerol, pH7.3.
Purification Method	Antigen Affinity Purified
Isotype	IgG
Clonality	Polyclonal
Alias	Cell cycle checkpoint protein RAD1 (hRAD1) (EC 3.1.11.2) (DNA repair exonuclease rad1 homolog) (Rad1-like DNA damage checkpoint protein), RAD1, REC1
Immunogen Species	Homo sapiens (Human)
Research Area	Epigenetics and Nuclear Signaling
Target Names	RAD1

Image



Western blot

All lanes: Cell cycle checkpoint protein RAD1 antibody at 6µg/ml + NIH/3T3 whole cell lysate
 Secondary
 Goat polyclonal to rabbit IgG at 1/10000 dilution
 Predicted band size: 32, 28, 8 kDa
 Observed band size: 32 kDa



Immunohistochemistry of paraffin-embedded human testis tissue using CSB-PA019252ESR1HU at dilution of 1:100

Usage

For Research Use Only. Not for use in diagnostic or therapeutic procedures.