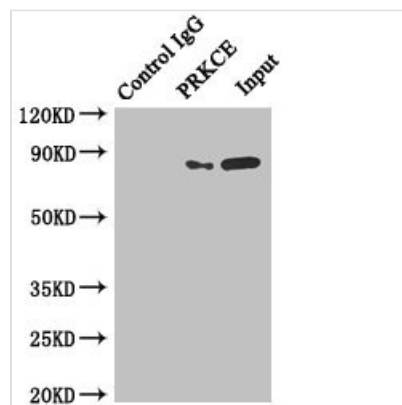




PRKCE Antibody

Product Code	CSB-PA018704ESR2HU
Storage	Upon receipt, store at -20°C or -80°C. Avoid repeated freeze.
Uniprot No.	Q02156
Immunogen	Recombinant Human Protein kinase C epsilon type protein (488-737AA)
Raised In	Rabbit
Species Reactivity	Human
Tested Applications	ELISA, IP; Recommended dilution: IP:1:200-1:2000
Form	Liquid
Conjugate	Non-conjugated
Storage Buffer	PBS with 0.02% sodium azide, 50% glycerol, pH7.3.
Purification Method	Antigen Affinity Purified
Isotype	IgG
Clonality	Polyclonal
Alias	Protein kinase C epsilon type (EC 2.7.11.13) (nPKC-epsilon), PRKCE, PKCE
Immunogen Species	Homo sapiens (Human)
Research Area	Signal Transduction
Target Names	PRKCE

Image



Immunoprecipitating PRKCE in MCF-7 whole cell lysate

Lane 1: Rabbit control IgG instead of (1µg) instead of CSB-PA018704ESR2HU in MCF-7 whole cell lysate. For western blotting, a HRP-conjugated anti-rabbit IgG, specific to the non-reduced form of IgG was used as the Secondary antibody (1/50000)

Lane 2: CSB-PA018704ESR2HU (4µg) + MCF-7 whole cell lysate (500µg)

Lane 3: MCF-7 whole cell lysate (20µg)