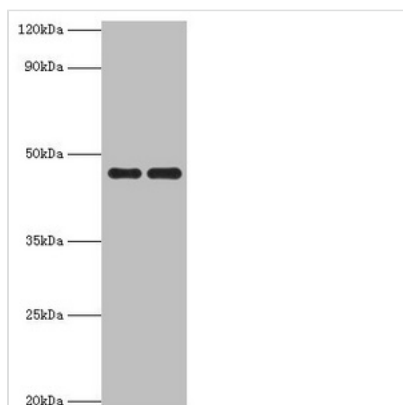




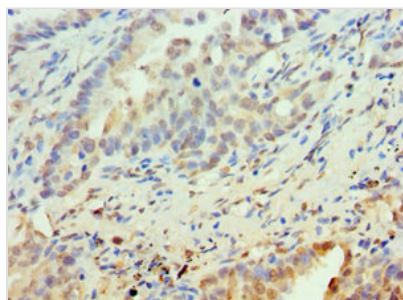
PAX6 Antibody

Product Code	CSB-PA017492DSR2HU
Storage	Upon receipt, store at -20°C or -80°C. Avoid repeated freeze.
Uniprot No.	P26367
Immunogen	Recombinant Human Paired box protein Pax-6 protein (1-300AA)
Raised In	Rabbit
Species Reactivity	Human, Mouse
Tested Applications	ELISA, WB, IHC; Recommended dilution: WB:1:500-1:2000, IHC:1:20-1:200
Form	Liquid
Conjugate	Non-conjugated
Storage Buffer	PBS with 0.02% sodium azide, 50% glycerol, pH7.3.
Purification Method	Antigen Affinity Purified
Isotype	IgG
Clonality	Polyclonal
Alias	Paired box protein Pax-6 (Aniridia type II protein) (Oculorhombin), PAX6, AN2
Immunogen Species	Homo sapiens (Human)
Research Area	Neuroscience
Target Names	PAX6

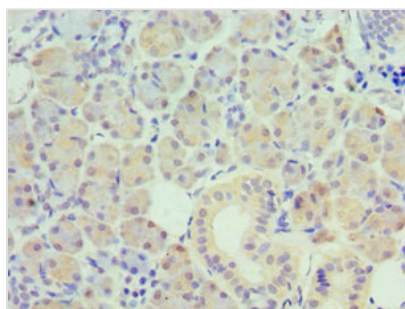
Image



Western blot
 All lanes: Paired box protein Pax-6 antibody at 1µg/ml
 Lane 1: Mouse stomach tissue
 Lane 2: Mouse eye tissue
 Secondary
 Goat polyclonal to rabbit IgG at 1/10000 dilution
 Predicted band size: 47, 49 kDa
 Observed band size: 47 kDa



Immunohistochemistry of paraffin-embedded human lung cancer using CSB-PA017492DSR2HU at dilution of 1:100



Immunohistochemistry of paraffin-embedded human pancreatic tissue using CSB-PA017492DSR2HU at dilution of 1:100