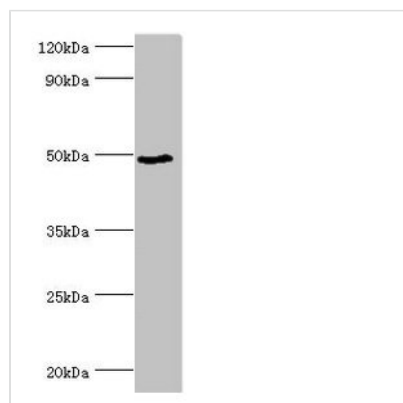




# BANP Antibody

<b>Product Code</b>	CSB-PA854079ESR1HU
<b>Storage</b>	Upon receipt, store at -20°C or -80°C. Avoid repeated freeze.
<b>Uniprot No.</b>	Q8N9N5
<b>Immunogen</b>	Recombinant Human Protein BANP protein (1-260AA)
<b>Raised In</b>	Rabbit
<b>Species Reactivity</b>	Human
<b>Tested Applications</b>	ELISA, WB, IHC; Recommended dilution: WB:1:500-1:2000, IHC:1:20-1:200
<b>Form</b>	Liquid
<b>Conjugate</b>	Non-conjugated
<b>Storage Buffer</b>	PBS with 0.02% sodium azide, 50% glycerol, pH7.3.
<b>Purification Method</b>	Antigen Affinity Purified
<b>Isotype</b>	IgG
<b>Clonality</b>	Polyclonal
<b>Alias</b>	Protein BANP (BEN domain-containing protein 1) (Btg3-associated nuclear protein) (Scaffold/matrix-associated region-1-binding protein), BANP, BEND1 SMAR1
<b>Immunogen Species</b>	Homo sapiens (Human)
<b>Research Area</b>	Epigenetics and Nuclear Signaling
<b>Target Names</b>	BANP

## Image



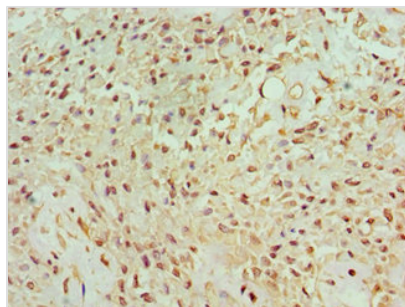
Western blot

All lanes: BANP antibody at 6µg/ml + HepG2 whole cell lysate

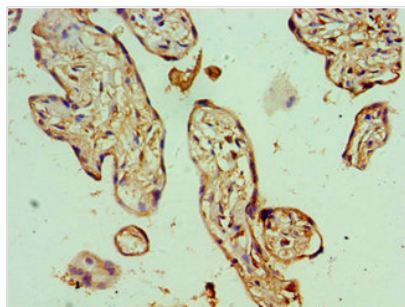
Secondary

Goat polyclonal to rabbit IgG at 1/10000 dilution  
Predicted band size: 57, 52, 49, 54, 55, 51, 56 kDa

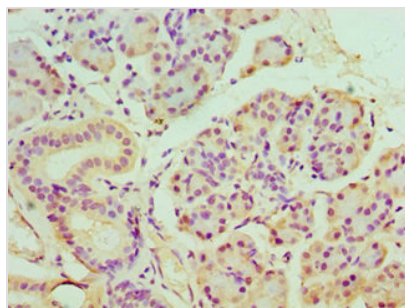
Observed band size: 49 kDa



Immunohistochemistry of paraffin-embedded human breast cancer using CSB-PA854079ESR1HU at dilution of 1:100



Immunohistochemistry of paraffin-embedded human placenta tissue using CSB-PA854079ESR1HU at dilution of 1:100



Immunohistochemistry of paraffin-embedded human pancreatic tissue using CSB-PA854079ESR1HU at dilution of 1:100

## Usage

For Research Use Only. Not for use in diagnostic or therapeutic procedures.