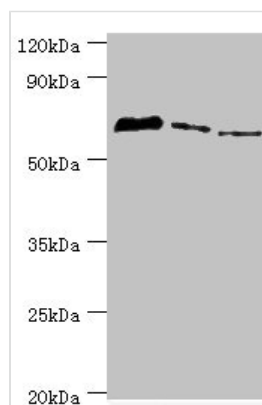




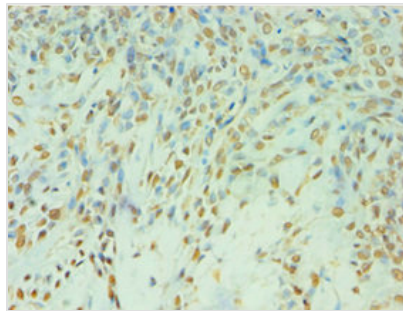
# TDP1 Antibody

<b>Product Code</b>	CSB-PA023352ESR1HU
<b>Storage</b>	Upon receipt, store at -20°C or -80°C. Avoid repeated freeze.
<b>Uniprot No.</b>	Q9NUW8
<b>Immunogen</b>	Recombinant Human Tyrosyl-DNA phosphodiesterase 1 protein (1-260AA)
<b>Raised In</b>	Rabbit
<b>Species Reactivity</b>	Human, Mouse, Rat
<b>Tested Applications</b>	ELISA, WB, IHC, IP; Recommended dilution: WB:1:200-1:2000, IHC:1:20-1:200, IP:1:200-1:2000
<b>Form</b>	Liquid
<b>Conjugate</b>	Non-conjugated
<b>Storage Buffer</b>	PBS with 0.02% sodium azide, 50% glycerol, pH7.3.
<b>Purification Method</b>	Antigen Affinity Purified
<b>Isotype</b>	IgG
<b>Clonality</b>	Polyclonal
<b>Alias</b>	Tyrosyl-DNA phosphodiesterase 1 (Tyr-DNA phosphodiesterase 1) (EC 3.1.4.-), TDP1
<b>Immunogen Species</b>	Homo sapiens (Human)
<b>Research Area</b>	Epigenetics and Nuclear Signaling
<b>Target Names</b>	TDP1

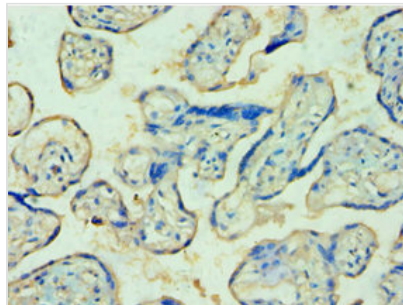
## Image



Western blot  
 All lanes: Tyrosyl-DNA phosphodiesterase 1 antibody at 8μg/ml  
 Lane 1: MCF-7 whole cell lysate  
 Lane 2: Mouse lung tissue  
 Lane 3: Rat brain tissue  
 Secondary  
 Goat polyclonal to rabbit IgG at 1/10000 dilution  
 Predicted band size: 69, 42 kDa  
 Observed band size: 69 kDa



Immunohistochemistry of paraffin-embedded human breast cancer using CSB-PA023352ESR1HU at dilution of 1:100



Immunohistochemistry of paraffin-embedded human placenta tissue using CSB-PA023352ESR1HU at dilution of 1:100