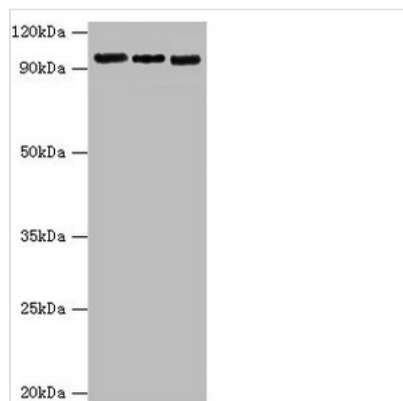




CLOCK Antibody

Product Code	CSB-PA005574ESR1HU
Storage	Upon receipt, store at -20°C or -80°C. Avoid repeated freeze.
Uniprot No.	O15516
Immunogen	Recombinant Human Circadian locomoter output cycles protein kaput protein (577-846AA)
Raised In	Rabbit
Species Reactivity	Human
Tested Applications	ELISA, WB, IHC; Recommended dilution: WB:1:500-1:2000, IHC:1:20-1:200
Form	Liquid
Conjugate	Non-conjugated
Storage Buffer	PBS with 0.02% sodium azide, 50% glycerol, pH7.3.
Purification Method	Antigen Affinity Purified
Isotype	IgG
Clonality	Polyclonal
Alias	Circadian locomoter output cycles protein kaput (hCLOCK) (EC 2.3.1.48) (Class E basic helix-loop-helix protein 8) (bHLHe8), CLOCK, BHLHE8 KIAA0334
Immunogen Species	Homo sapiens (Human)
Research Area	Neuroscience
Target Names	CLOCK

Image



Western blot

All lanes: Circadian locomoter output cycles protein kaput antibody at 6µg/ml

Lane 1: Hela whole cell lysate

Lane 2: NIH/3T3 whole cell lysate

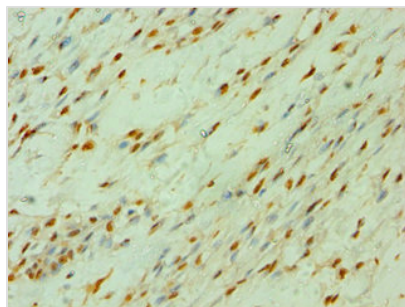
Lane 3: 293T whole cell lysate

Secondary

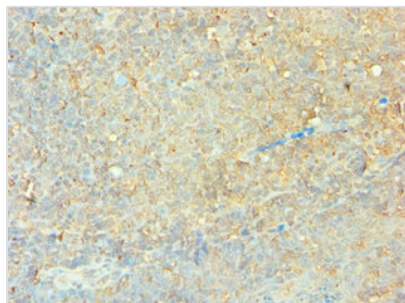
Goat polyclonal to rabbit IgG at 1/10000 dilution

Predicted band size: 95 kDa

Observed band size: 95 kDa



Immunohistochemistry of paraffin-embedded human breast cancer using CSB-PA005574ESR1HU at dilution of 1:100



Immunohistochemistry of paraffin-embedded human tonsil tissue using CSB-PA005574ESR1HU at dilution of 1:100

Usage

For Research Use Only. Not for use in diagnostic or therapeutic procedures.