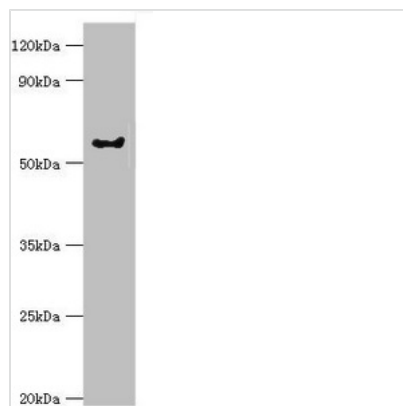




GRK6 Antibody

Product Code	CSB-PA009927ESR2HU
Storage	Upon receipt, store at -20°C or -80°C. Avoid repeated freeze.
Uniprot No.	P43250
Immunogen	Recombinant Human G protein-coupled receptor kinase 6 protein (1-170AA)
Raised In	Rabbit
Species Reactivity	Human, Rat
Tested Applications	ELISA, WB, IHC; Recommended dilution: WB:1:500-1:2000, IHC:1:20-1:200
Form	Liquid
Conjugate	Non-conjugated
Storage Buffer	PBS with 0.02% sodium azide, 50% glycerol, pH7.3.
Purification Method	Antigen Affinity Purified
Isotype	IgG
Clonality	Polyclonal
Alias	G protein-coupled receptor kinase 6 (EC 2.7.11.16) (G protein-coupled receptor kinase GRK6), GRK6, GPRK6
Immunogen Species	Homo sapiens (Human)
Research Area	Signal Transduction
Target Names	GRK6

Image



Western blot

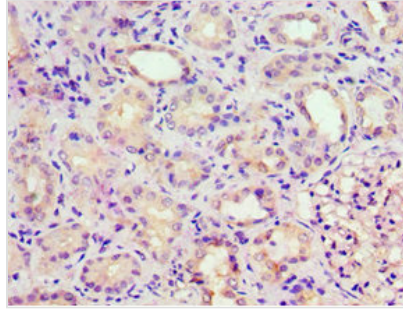
All lanes: G protein-coupled receptor kinase 6 antibody at 6µg/ml + Rat heart tissue

Secondary

Goat polyclonal to rabbit IgG at 1/10000 dilution

Predicted band size: 66, 68, 65 kDa

Observed band size: 66 kDa



Immunohistochemistry of paraffin-embedded human kidney tissue using CSB-PA009927ESR2HU at dilution of 1:100

Usage

For Research Use Only. Not for use in diagnostic or therapeutic procedures.