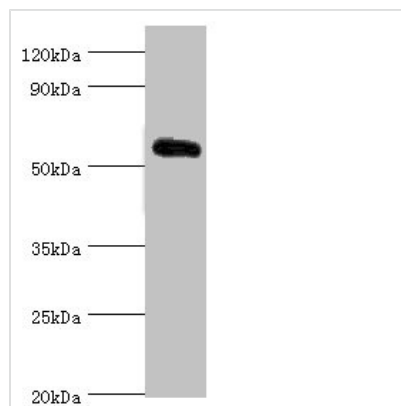




# KLF4 Antibody

|                            |   |
|----------------------------|---|
| <b>Product Code</b>        | CSB-PA012394DSR2HU  |
| <b>Storage</b>             | Upon receipt, store at -20°C or -80°C. Avoid repeated freeze.   |
| <b>Uniprot No.</b>         | O43474  |
| <b>Immunogen</b>           | Recombinant Human Krueppel-like factor 4 protein (30-230AA)   |
| <b>Raised In</b>           | Rabbit  |
| <b>Species Reactivity</b>  | Human   |
| <b>Tested Applications</b> | ELISA, WB, IHC; Recommended dilution: WB:1:500-1:2000, IHC:1:20-1:200   |
| <b>Form</b>                | Liquid  |
| <b>Conjugate</b>           | Non-conjugated  |
| <b>Storage Buffer</b>      | PBS with 0.02% sodium azide, 50% glycerol, pH7.3.   |
| <b>Purification Method</b> | Antigen Affinity Purified   |
| <b>Isotype</b>             | IgG   |
| <b>Clonality</b>           | Polyclonal  |
| <b>Alias</b>               | Krueppel-like factor 4 (Epithelial zinc finger protein EZF) (Gut-enriched krueppel-like factor), KLF4, EZF GKLf |
| <b>Immunogen Species</b>   | Homo sapiens (Human)  |
| <b>Research Area</b>       | Epigenetics and Nuclear Signaling   |
| <b>Target Names</b>        | KLF4  |

## Image



### Western blot

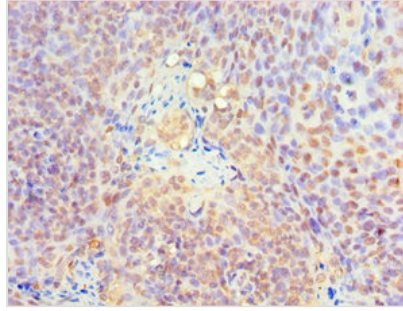
All lanes: Krueppel-like factor 4 antibody at 5µg/ml + 293T whole cell lysate

### Secondary

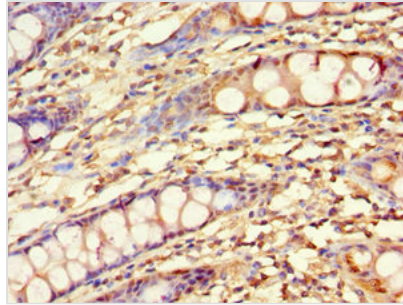
Goat polyclonal to rabbit IgG at 1/10000 dilution

Predicted band size: 55, 52, 46, 13, 7 kDa

Observed band size: 55 kDa



Immunohistochemistry of paraffin-embedded human tonsil tissue using CSB-PA012394DSR2HU at dilution of 1:100



Immunohistochemistry of paraffin-embedded human colon tissue using CSB-PA012394DSR2HU at dilution of 1:100