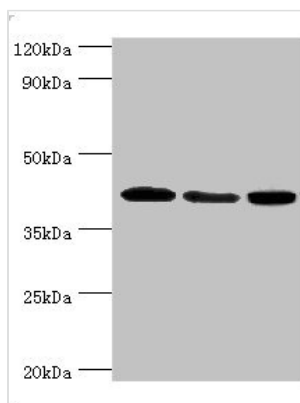




MAPK13 Antibody

Product Code	CSB-PA013452ESR2HU
Storage	Upon receipt, store at -20°C or -80°C. Avoid repeated freeze.
Uniprot No.	O15264
Immunogen	Recombinant Human Mitogen-activated protein kinase 13 protein (1-365AA)
Raised In	Rabbit
Species Reactivity	Human
Tested Applications	ELISA, WB, IHC; Recommended dilution: WB:1:500-1:2000, IHC:1:20-1:200
Form	Liquid
Conjugate	Non-conjugated
Storage Buffer	PBS with 0.02% sodium azide, 50% glycerol, pH7.3.
Purification Method	Antigen Affinity Purified
Isotype	IgG
Clonality	Polyclonal
Alias	Mitogen-activated protein kinase 13 (MAP kinase 13) (MAPK 13) (EC 2.7.11.24) (Mitogen-activated protein kinase p38 delta) (MAP kinase p38 delta) (Stress-activated protein kinase 4), MAPK13, PRKM13 SAPK4
Immunogen Species	Homo sapiens (Human)
Research Area	Cell Biology
Target Names	MAPK13

Image



Western blot

All lanes: Mitogen-activated protein kinase 13 antibody at 3µg/ml

Lane 1: HepG2 whole cell lysate

Lane 2: Hela whole cell lysate

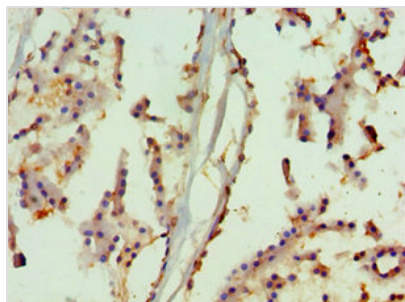
Lane 3: MCF-7 whole cell lysate

Secondary

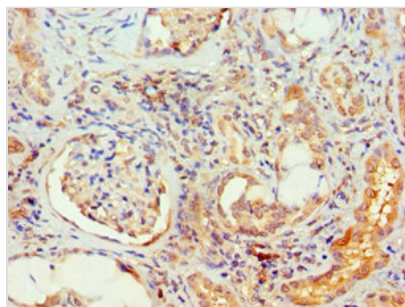
Goat polyclonal to rabbit IgG at 1/10000 dilution

Predicted band size: 43, 29 kDa

Observed band size: 43 kDa



Immunohistochemistry of paraffin-embedded human prostate tissue using CSB-PA013452ESR2HU at dilution of 1:100



Immunohistochemistry of paraffin-embedded human kidney tissue using CSB-PA013452ESR2HU at dilution of 1:100

Usage

For Research Use Only. Not for use in diagnostic or therapeutic procedures.