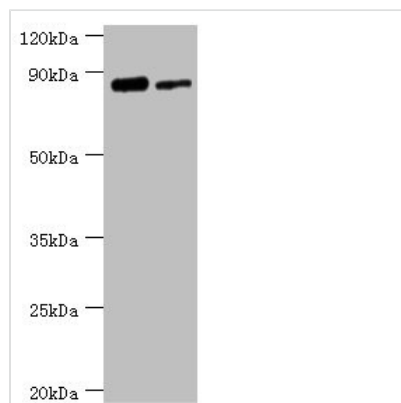




# ERCC2 Antibody

<b>Product Code</b>	CSB-PA007770ESR2HU
<b>Storage</b>	Upon receipt, store at -20°C or -80°C. Avoid repeated freeze.
<b>Uniprot No.</b>	P18074
<b>Immunogen</b>	Recombinant Human TFIIH basal transcription factor complex helicase XPD subunit protein (1-300AA)
<b>Raised In</b>	Rabbit
<b>Species Reactivity</b>	Human
<b>Tested Applications</b>	ELISA, WB, IHC; Recommended dilution: WB:1:500-1:2000, IHC:1:20-1:200
<b>Form</b>	Liquid
<b>Conjugate</b>	Non-conjugated
<b>Storage Buffer</b>	PBS with 0.02% sodium azide, 50% glycerol, pH7.3.
<b>Purification Method</b>	Antigen Affinity Purified
<b>Isotype</b>	IgG
<b>Clonality</b>	Polyclonal
<b>Alias</b>	General transcription and DNA repair factor IIH helicase subunit XPD (TFIIH subunit XPD) (EC 3.6.4.12) (Basic transcription factor 2 80 kDa subunit) (BTF2 p80) (CXPB) (DNA excision repair protein ERCC-2) (DNA repair protein complementing XP-D cells) (TFIIH basal transcription factor complex 80 kDa subunit) (TFIIH 80 kDa subunit) (TFIIH p80) (Xeroderma pigmentosum group D-complementing protein), ERCC2, XPD XPDC
<b>Immunogen Species</b>	Homo sapiens (Human)
<b>Research Area</b>	Epigenetics and Nuclear Signaling
<b>Target Names</b>	ERCC2

## Image



### Western blot

All lanes: TFIIH basal transcription factor complex helicase XPD subunit antibody at 2µg/ml

Lane 1: 293T whole cell lysate

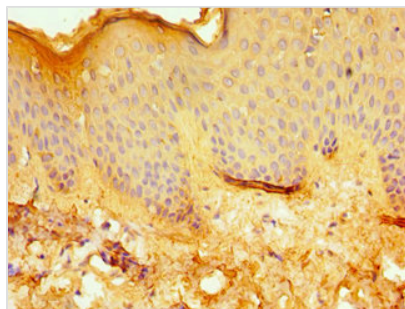
Lane 2: K562 whole cell lysate

Secondary

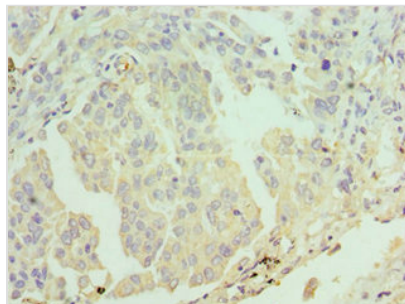
Goat polyclonal to rabbit IgG at 1/10000 dilution

Predicted band size: 87, 47 kDa

Observed band size: 87 kDa



Immunohistochemistry of paraffin-embedded human skin tissue using CSB-PA007770ESR2HU at dilution of 1:100



Immunohistochemistry of paraffin-embedded human lung cancer using CSB-PA007770ESR2HU at dilution of 1:100

## Usage

For Research Use Only. Not for use in diagnostic or therapeutic procedures.