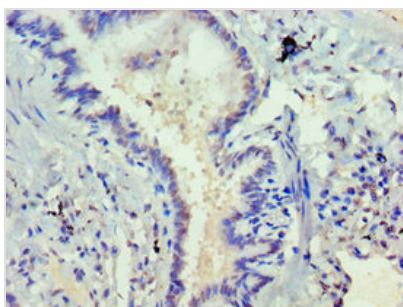




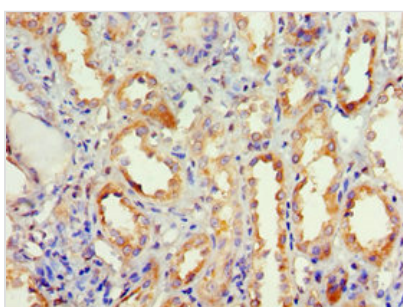
# DVL2 Antibody

<b>Product Code</b>	CSB-PA007286ESR2HU
<b>Storage</b>	Upon receipt, store at -20°C or -80°C. Avoid repeated freeze.
<b>Uniprot No.</b>	O14641
<b>Immunogen</b>	Recombinant Human Segment polarity protein dishevelled homolog DVL-2 protein (1-240AA)
<b>Raised In</b>	Rabbit
<b>Species Reactivity</b>	Human
<b>Tested Applications</b>	ELISA, WB, IHC, IF; Recommended dilution: WB:1:500-1:5000, IHC:1:20-1:200, IF:1:50-1:200
<b>Form</b>	Liquid
<b>Conjugate</b>	Non-conjugated
<b>Storage Buffer</b>	PBS with 0.02% sodium azide, 50% glycerol, pH7.3.
<b>Purification Method</b>	Antigen Affinity Purified
<b>Isotype</b>	IgG
<b>Clonality</b>	Polyclonal
<b>Alias</b>	Segment polarity protein dishevelled homolog DVL-2 (Dishevelled-2) (DSH homolog 2), DVL2
<b>Immunogen Species</b>	Homo sapiens (Human)
<b>Research Area</b>	Stem Cells
<b>Target Names</b>	DVL2

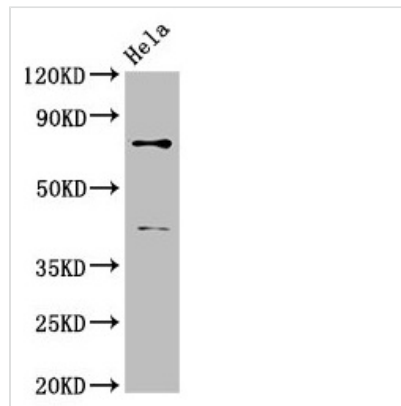
## Image



Immunohistochemistry of paraffin-embedded human lung tissue using CSB-PA007286ESR2HU at dilution of 1:100



Immunohistochemistry of paraffin-embedded human kidney tissue using CSB-PA007286ESR2HU at dilution of 1:100

**Western Blot**

Positive WB detected in: HeLa whole cell lysate

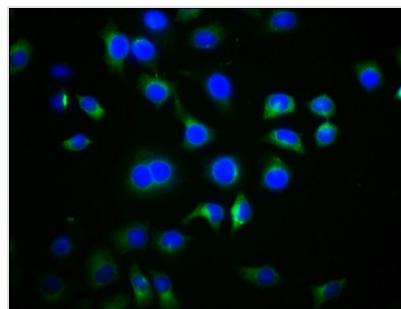
All lanes: DVL2 antibody at 2.3 $\mu$ g/ml

Secondary

Goat polyclonal to rabbit IgG at 1/50000 dilution

Predicted band size: 79 kDa

Observed band size: 79 kDa



Immunofluorescence staining of A549 cells with CSB-PA007286ESR2HU at 1:77, counter-stained with DAPI. The cells were fixed in 4% formaldehyde, permeabilized using 0.2% Triton X-100 and blocked in 10% normal Goat Serum. The cells were then incubated with the antibody overnight at 4°C. The secondary antibody was Alexa Fluor 488-conjugated AffiniPure Goat Anti-Rabbit IgG(H+L).

**Usage**

For Research Use Only. Not for use in diagnostic or therapeutic procedures.