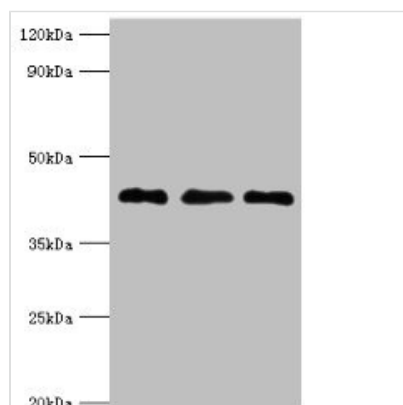




ERGIC2 Antibody

| | |
|----------------------------|---|
| Product Code | CSB-PA857020ESR1HU |
| Storage | Upon receipt, store at -20°C or -80°C. Avoid repeated freeze. |
| Uniprot No. | Q96RQ1 |
| Immunogen | Recombinant Human Endoplasmic reticulum-Golgi intermediate compartment protein 2 protein (55-310AA) |
| Raised In | Rabbit |
| Species Reactivity | Human, Mouse |
| Tested Applications | ELISA, WB; Recommended dilution: WB:1:500-1:2000 |
| Form | Liquid |
| Conjugate | Non-conjugated |
| Storage Buffer | PBS with 0.02% sodium azide, 50% glycerol, pH7.3. |
| Purification Method | Antigen Affinity Purified |
| Isotype | IgG |
| Clonality | Polyclonal |
| Alias | Endoplasmic reticulum-Golgi intermediate compartment protein 2, ERGIC2, ERV41 PTX1 |
| Immunogen Species | Homo sapiens (Human) |
| Research Area | Signal Transduction |
| Target Names | ERGIC2 |

Image



Western blot

All lanes: Endoplasmic reticulum-Golgi intermediate compartment protein 2 antibody at 4µg/ml

Lane 1: HepG2 whole cell lysate

Lane 2: Jurkat whole cell lysate

Lane 3: Mouse lung tissue

Secondary

Goat polyclonal to rabbit IgG at 1/10000 dilution

Predicted band size: 43 kDa

Observed band size: 43 kDa

Usage

For Research Use Only. Not for use in diagnostic or therapeutic procedures.