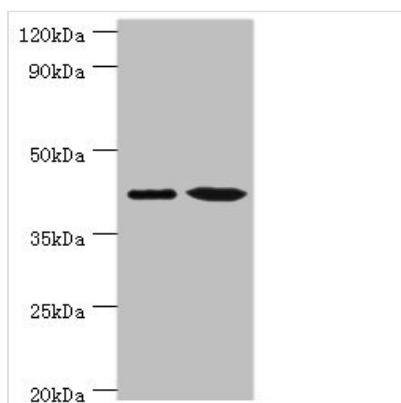




ERGIC2 Antibody

Product Code	CSB-PA857020ESR2HU
Storage	Upon receipt, store at -20°C or -80°C. Avoid repeated freeze.
Uniprot No.	Q96RQ1
Immunogen	Recombinant Human Endoplasmic reticulum-Golgi intermediate compartment protein 2 protein (55-310AA)
Raised In	Rabbit
Species Reactivity	Human
Tested Applications	ELISA, WB, IHC; Recommended dilution: WB:1:500-1:2000, IHC:1:20-1:200
Form	Liquid
Conjugate	Non-conjugated
Storage Buffer	PBS with 0.02% sodium azide, 50% glycerol, pH7.3.
Purification Method	Antigen Affinity Purified
Isotype	IgG
Clonality	Polyclonal
Alias	Endoplasmic reticulum-Golgi intermediate compartment protein 2, ERGIC2, ERV41 PTX1
Immunogen Species	Homo sapiens (Human)
Research Area	Signal Transduction
Target Names	ERGIC2

Image



Western blot

All lanes: Endoplasmic reticulum-Golgi intermediate compartment protein 2 antibody at 4µg/ml

Lane 1: HepG2 whole cell lysate

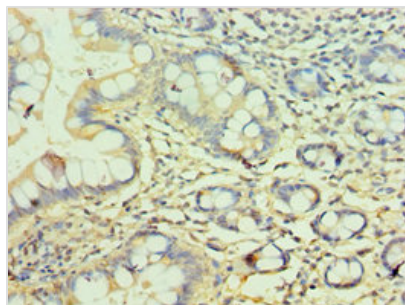
Lane 2: Jurkat whole cell lysate

Secondary

Goat polyclonal to rabbit IgG at 1/10000 dilution

Predicted band size: 43 kDa

Observed band size: 43 kDa



Immunohistochemistry of paraffin-embedded human small intestine tissue using CSB-PA857020ESR2HU at dilution of 1:100

Usage

For Research Use Only. Not for use in diagnostic or therapeutic procedures.