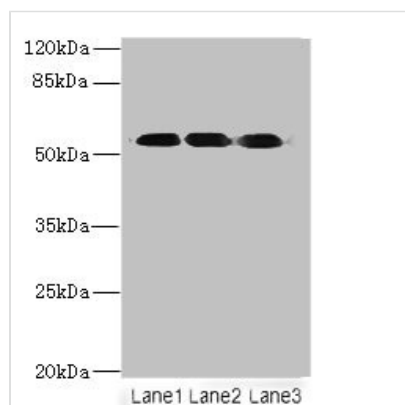




FZR1 Antibody

Product Code	CSB-PA892473LA01HU
Storage	Upon receipt, store at -20°C or -80°C. Avoid repeated freeze.
Uniprot No.	Q9UM11
Immunogen	Recombinant Human Fizzy-related protein homolog protein (1-493AA)
Raised In	Rabbit
Species Reactivity	Human
Tested Applications	ELISA, WB, IHC; Recommended dilution: WB:1:500-1:2000, IHC:1:20-1:200
Form	Liquid
Conjugate	Non-conjugated
Storage Buffer	Preservative: 0.03% Proclin 300 Constituents: 50% Glycerol, 0.01M PBS, PH 7.4
Purification Method	>95%, Protein G purified
Isotype	IgG
Clonality	Polyclonal
Alias	Fizzy-related protein homolog (Fzr) (CDC20-like protein 1) (Cdh1/Hct1 homolog) (hCDH1), FZR1, CDH1 FYR FZR KIAA1242
Immunogen Species	Homo sapiens (Human)
Research Area	Cell Biology
Target Names	FZR1

Image



Western blot

All lanes: FZR1 antibody at 6µg/ml

Lane 1: HeLa whole cell lysate

Lane 2: Jurkat whole cell lysate

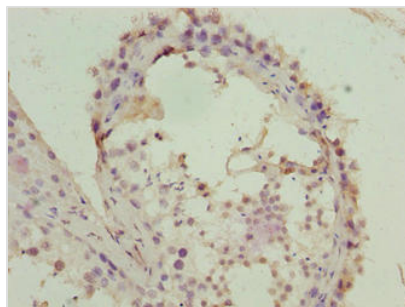
Lane 3: 293T whole cell lysate

Secondary

Goat polyclonal to rabbit IgG at 1/10000 dilution

Predicted band size: 56, 55, 45 kDa

Observed band size: 56 kDa



Immunohistochemistry of paraffin-embedded human testis tissue using CSB-PA892473LA01HU at dilution of 1:100

Usage

For Research Use Only. Not for use in diagnostic or therapeutic procedures.