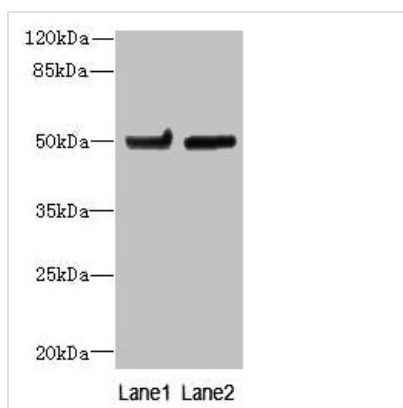




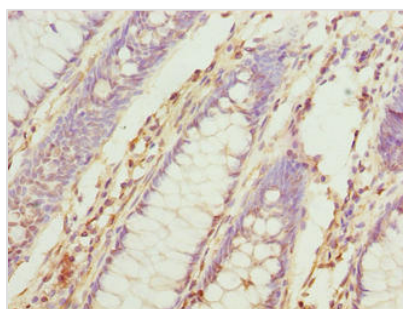
TUBB6 Antibody

Product Code	CSB-PA880105LA01HU
Storage	Upon receipt, store at -20°C or -80°C. Avoid repeated freeze.
Uniprot No.	Q9BUF5
Immunogen	Recombinant Human Tubulin beta-6 chain protein (1-446AA)
Raised In	Rabbit
Species Reactivity	Human
Tested Applications	ELISA, WB, IHC; Recommended dilution: WB:1:500-1:2000, IHC:1:20-1:200
Form	Liquid
Conjugate	Non-conjugated
Storage Buffer	Preservative: 0.03% Proclin 300 Constituents: 50% Glycerol, 0.01M PBS, PH 7.4
Purification Method	>95%, Protein G purified
Isotype	IgG
Clonality	Polyclonal
Alias	Tubulin beta-6 chain (Tubulin beta class V), TUBB6
Immunogen Species	Homo sapiens (Human)
Research Area	Signal Transduction
Target Names	TUBB6

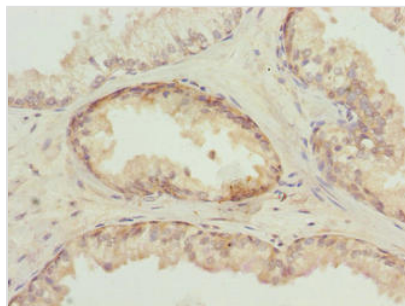
Image



Western blot
All lanes: TUBB6 antibody at 4μg/ml
Lane 1: Hela whole cell lysate
Lane 2: MDA-MB-231 whole cell lysate
Secondary
Goat polyclonal to rabbit IgG at 1/10000 dilution
Predicted band size: 50 kDa
Observed band size: 50 kDa



Immunohistochemistry of paraffin-embedded human colon cancer using CSB-PA880105LA01HU at dilution of 1:100



Immunohistochemistry of paraffin-embedded human prostate cancer using CSB-PA880105LA01HU at dilution of 1:100