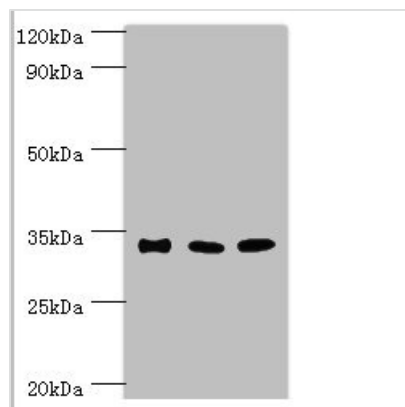




SULT1A3 Antibody

Product Code	CSB-PA022935ESR1HU
Storage	Upon receipt, store at -20°C or -80°C. Avoid repeated freeze.
Uniprot No.	P0DMM9
Immunogen	Recombinant Human Sulfotransferase 1A3 protein (1-295AA)
Raised In	Rabbit
Species Reactivity	Human, Mouse
Tested Applications	ELISA, WB, IHC; Recommended dilution: WB:1:500-1:2000, IHC:1:20-1:200
Form	Liquid
Conjugate	Non-conjugated
Storage Buffer	PBS with 0.02% sodium azide, 50% glycerol, pH7.3.
Purification Method	Antigen Affinity Purified
Isotype	IgG
Clonality	Polyclonal
Alias	Sulfotransferase 1A3 (ST1A3) (EC 2.8.2.1) (Aryl sulfotransferase 1A3/1A4) (Catecholamine-sulfating phenol sulfotransferase) (HAST3) (M-PST) (Monoamine-sulfating phenol sulfotransferase) (Placental estrogen sulfotransferase) (Sulfotransferase 1A3/1A4) (Sulfotransferase, monoamine-preferring) (Thermolabile phenol sulfotransferase) (TL-PST), SULT1A3, STM
Immunogen Species	Homo sapiens (Human)
Research Area	Others
Target Names	SULT1A3

Image



Western blot

All lanes: Sulfotransferase 1A3 antibody at 10µg/ml

Lane 1: A549 whole cell lysate

Lane 2: Mouse liver tissue

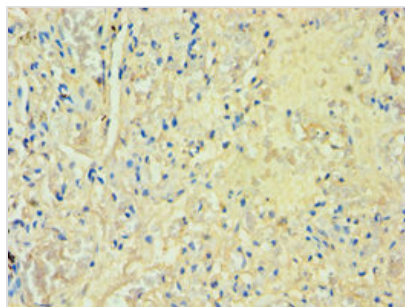
Lane 2: Mouse kidney tissue

Secondary

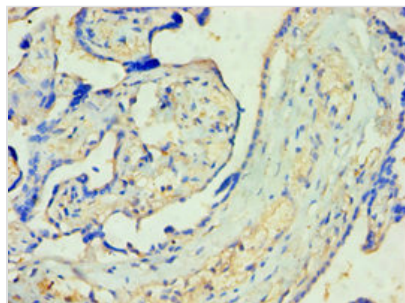
Goat polyclonal to rabbit IgG at 1/10000 dilution

Predicted band size: 35, 23 kDa

Observed band size: 35 kDa



Immunohistochemistry of paraffin-embedded human lung tissue using CSB-PA022935ESR1HU at dilution of 1:100



Immunohistochemistry of paraffin-embedded human placenta tissue using CSB-PA022935ESR1HU at dilution of 1:100

Usage

For Research Use Only. Not for use in diagnostic or therapeutic procedures.