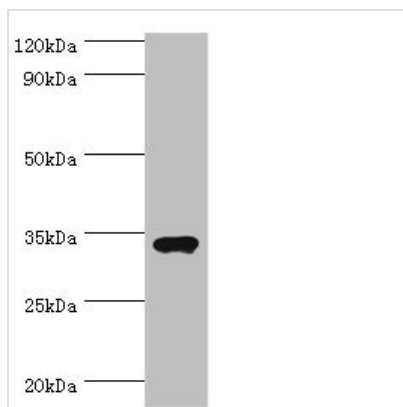




# SULT1A3 Antibody

<b>Product Code</b>	CSB-PA022935ESR2HU
<b>Storage</b>	Upon receipt, store at -20°C or -80°C. Avoid repeated freeze.
<b>Uniprot No.</b>	P0DMM9
<b>Immunogen</b>	Recombinant Human Sulfotransferase 1A3 protein (1-295AA)
<b>Raised In</b>	Rabbit
<b>Species Reactivity</b>	Human
<b>Tested Applications</b>	ELISA, WB, IHC; Recommended dilution: WB:1:500-1:2000, IHC:1:20-1:200
<b>Form</b>	Liquid
<b>Conjugate</b>	Non-conjugated
<b>Storage Buffer</b>	PBS with 0.02% sodium azide, 50% glycerol, pH7.3.
<b>Purification Method</b>	Antigen Affinity Purified
<b>Isotype</b>	IgG
<b>Clonality</b>	Polyclonal
<b>Alias</b>	Sulfotransferase 1A3 (ST1A3) (EC 2.8.2.1) (Aryl sulfotransferase 1A3/1A4) (Catecholamine-sulfating phenol sulfotransferase) (HAST3) (M-PST) (Monoamine-sulfating phenol sulfotransferase) (Placental estrogen sulfotransferase) (Sulfotransferase 1A3/1A4) (Sulfotransferase, monoamine-preferring) (Thermolabile phenol sulfotransferase) (TL-PST), SULT1A3, STM
<b>Immunogen Species</b>	Homo sapiens (Human)
<b>Research Area</b>	Others
<b>Target Names</b>	SULT1A3

## Image



### Western blot

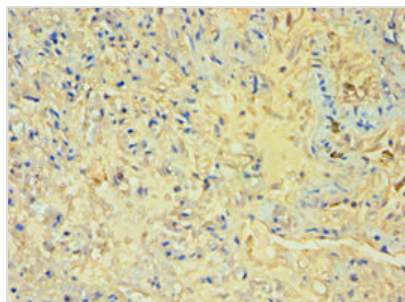
All lanes: Sulfotransferase 1A3 antibody at 7µg/ml + A549 whole cell lysate

Secondary

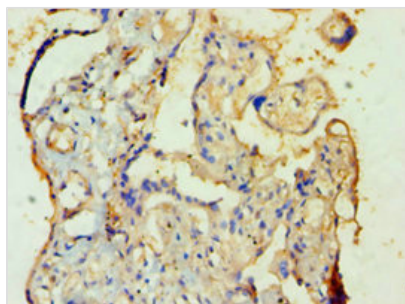
Goat polyclonal to rabbit IgG at 1/10000 dilution

Predicted band size: 35, 23 kDa

Observed band size: 35 kDa



Immunohistochemistry of paraffin-embedded human lung tissue using CSB-PA022935ESR2HU at dilution of 1:100



Immunohistochemistry of paraffin-embedded human placenta tissue using CSB-PA022935ESR2HU at dilution of 1:100

## Usage

For Research Use Only. Not for use in diagnostic or therapeutic procedures.