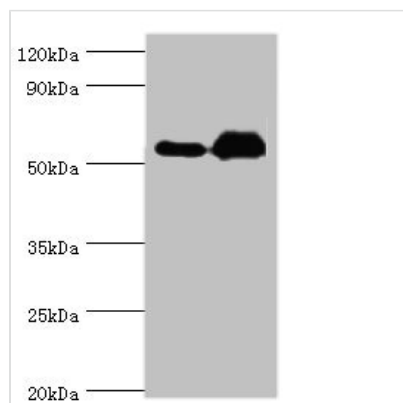




# ALDH1A2 Antibody

<b>Product Code</b>	CSB-PA001566ESR1HU
<b>Storage</b>	Upon receipt, store at -20°C or -80°C. Avoid repeated freeze.
<b>Uniprot No.</b>	O94788
<b>Immunogen</b>	Recombinant Human Retinal dehydrogenase 2 protein (1-180AA)
<b>Raised In</b>	Rabbit
<b>Species Reactivity</b>	Human, Mouse
<b>Tested Applications</b>	ELISA, WB, IHC; Recommended dilution: WB:1:500-1:5000, IHC:1:20-1:200
<b>Form</b>	Liquid
<b>Conjugate</b>	Non-conjugated
<b>Storage Buffer</b>	PBS with 0.02% sodium azide, 50% glycerol, pH7.3.
<b>Purification Method</b>	Antigen Affinity Purified
<b>Isotype</b>	IgG
<b>Clonality</b>	Polyclonal
<b>Alias</b>	Retinal dehydrogenase 2 (RALDH 2) (RaLDH2) (EC 1.2.1.36) (Aldehyde dehydrogenase family 1 member A2) (Retinaldehyde-specific dehydrogenase type 2) (RALDH(II)), ALDH1A2, RALDH2
<b>Immunogen Species</b>	Homo sapiens (Human)
<b>Research Area</b>	Neuroscience
<b>Target Names</b>	ALDH1A2

## Image



### Western blot

All lanes: Retinal dehydrogenase 2 antibody at 9µg/ml

Lane 1: K562 whole cell lysate

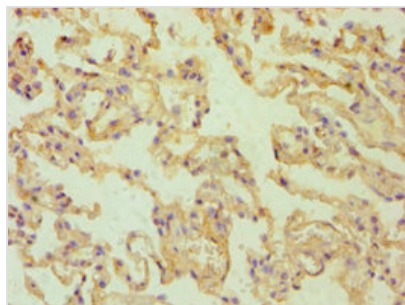
Lane 2: Mouse liver tissue

Secondary

Goat polyclonal to rabbit IgG at 1/10000 dilution

Predicted band size: 57, 54, 55, 47 kDa

Observed band size: 57 kDa



Immunohistochemistry of paraffin-embedded human lung tissue using CSB-PA001566ESR1HU at dilution of 1:100

---

**Usage**

For Research Use Only. Not for use in diagnostic or therapeutic procedures.