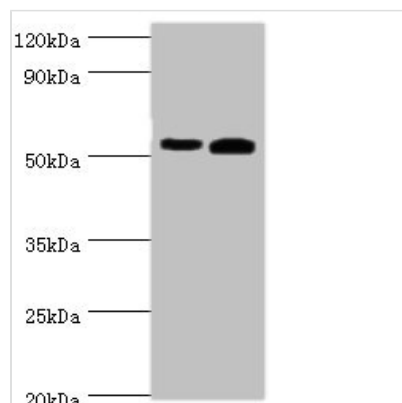




ALDH1A2 Antibody

Product Code	CSB-PA001566ESR2HU
Storage	Upon receipt, store at -20°C or -80°C. Avoid repeated freeze.
Uniprot No.	O94788
Immunogen	Recombinant Human Retinal dehydrogenase 2 protein (1-180AA)
Raised In	Rabbit
Species Reactivity	Human, Mouse
Tested Applications	ELISA, WB; Recommended dilution: WB:1:500-1:5000
Form	Liquid
Conjugate	Non-conjugated
Storage Buffer	PBS with 0.02% sodium azide, 50% glycerol, pH7.3.
Purification Method	Antigen Affinity Purified
Isotype	IgG
Clonality	Polyclonal
Alias	Retinal dehydrogenase 2 (RALDH 2) (RaIDH2) (EC 1.2.1.36) (Aldehyde dehydrogenase family 1 member A2) (Retinaldehyde-specific dehydrogenase type 2) (RALDH(II)), ALDH1A2, RALDH2
Immunogen Species	Homo sapiens (Human)
Research Area	Neuroscience
Target Names	ALDH1A2

Image



Western blot

All lanes: Retinal dehydrogenase 2 antibody at 14µg/ml

Lane 1: K562 whole cell lysate

Lane 2: Mouse liver tissue

Secondary

Goat polyclonal to rabbit IgG at 1/10000 dilution

Predicted band size: 57, 54, 55, 47 kDa

Observed band size: 57 kDa