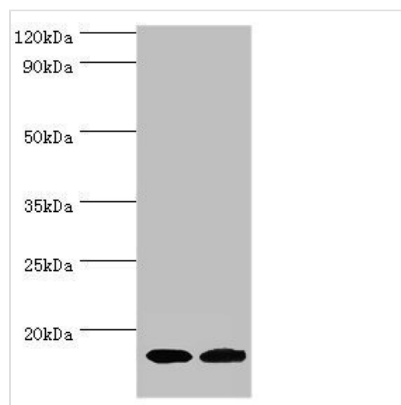




CPLX2 Antibody

| | |
|----------------------------|---|
| Product Code | CSB-PA761369ESR2HU |
| Storage | Upon receipt, store at -20°C or -80°C. Avoid repeated freeze. |
| Uniprot No. | Q6PUV4 |
| Immunogen | Recombinant Human Complexin-2 protein (1-134AA) |
| Raised In | Rabbit |
| Species Reactivity | Human, Rat |
| Tested Applications | ELISA, WB; Recommended dilution: WB:1:500-1:5000 |
| Form | Liquid |
| Conjugate | Non-conjugated |
| Storage Buffer | PBS with 0.02% sodium azide, 50% glycerol, pH7.3. |
| Purification Method | Antigen Affinity Purified |
| Isotype | IgG |
| Clonality | Polyclonal |
| Alias | Complexin-2 (Complexin II) (CPX II) (Synaphin-1), CPLX2 |
| Immunogen Species | Homo sapiens (Human) |
| Research Area | Neuroscience |
| Target Names | CPLX2 |

Image



Western blot

All lanes: Complexin-2 antibody at 6µg/ml

Lane 1: Rat brain tissue

Lane 2: A549 whole cell lysate

Secondary

Goat polyclonal to rabbit IgG at 1/10000 dilution

Predicted band size: 15 kDa

Observed band size: 15 kDa

Usage

For Research Use Only. Not for use in diagnostic or therapeutic procedures.