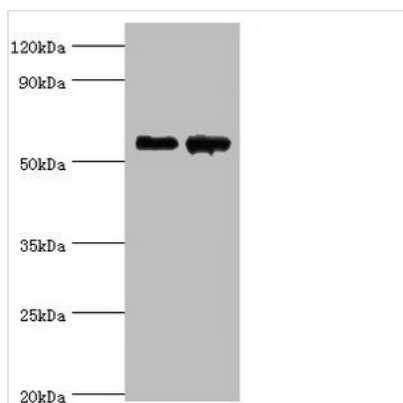




CNDP1 Antibody

Product Code	CSB-PA836242ESR1HU
Storage	Upon receipt, store at -20°C or -80°C. Avoid repeated freeze.
Uniprot No.	Q96KN2
Immunogen	Recombinant Human Beta-Ala-His dipeptidase protein (1-280AA)
Raised In	Rabbit
Species Reactivity	Human
Tested Applications	ELISA, WB, IHC; Recommended dilution: WB:1:500-1:2000, IHC:1:20-1:200
Form	Liquid
Conjugate	Non-conjugated
Storage Buffer	PBS with 0.02% sodium azide, 50% glycerol, pH7.3.
Purification Method	Antigen Affinity Purified
Isotype	IgG
Clonality	Polyclonal
Alias	Beta-Ala-His dipeptidase (EC 3.4.13.20) (CNDP dipeptidase 1) (Carnosine dipeptidase 1) (Glutamate carboxypeptidase-like protein 2) (Serum carnosinase), CNDP1, CN1 CPGL2
Immunogen Species	Homo sapiens (Human)
Research Area	Signal Transduction
Target Names	CNDP1

Image



Western blot

All lanes: Beta-Ala-His dipeptidase antibody at 4µg/ml

Lane 1: 293T whole cell lysate

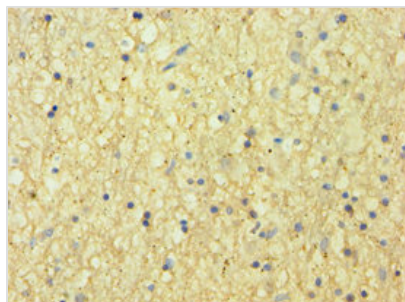
Lane 2: Hela whole cell lysate

Secondary

Goat polyclonal to rabbit IgG at 1/10000 dilution

Predicted band size: 57 kDa

Observed band size: 57 kDa



Immunohistochemistry of paraffin-embedded human brain tissue using CSB-PA836242ESR1HU at dilution of 1:100

Usage

For Research Use Only. Not for use in diagnostic or therapeutic procedures.