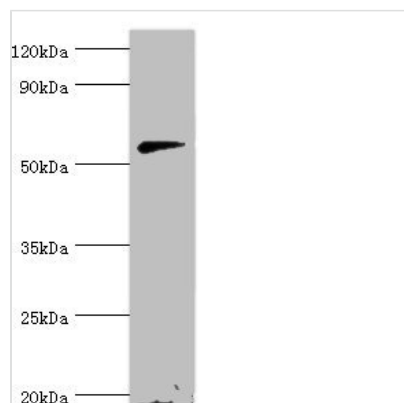




# CNDP1 Antibody

<b>Product Code</b>	CSB-PA836242ESR2HU
<b>Storage</b>	Upon receipt, store at -20°C or -80°C. Avoid repeated freeze.
<b>Uniprot No.</b>	Q96KN2
<b>Immunogen</b>	Recombinant Human Beta-Ala-His dipeptidase protein (1-280AA)
<b>Raised In</b>	Rabbit
<b>Species Reactivity</b>	Human
<b>Tested Applications</b>	ELISA, WB; Recommended dilution: WB:1:500-1:2000
<b>Form</b>	Liquid
<b>Conjugate</b>	Non-conjugated
<b>Storage Buffer</b>	PBS with 0.02% sodium azide, 50% glycerol, pH7.3.
<b>Purification Method</b>	Antigen Affinity Purified
<b>Isotype</b>	IgG
<b>Clonality</b>	Polyclonal
<b>Alias</b>	Beta-Ala-His dipeptidase (EC 3.4.13.20) (CNDP dipeptidase 1) (Carnosine dipeptidase 1) (Glutamate carboxypeptidase-like protein 2) (Serum carnosinase), CNDP1, CN1 CPGL2
<b>Immunogen Species</b>	Homo sapiens (Human)
<b>Research Area</b>	Signal Transduction
<b>Target Names</b>	CNDP1

## Image



Western blot

All lanes: Beta-Ala-His dipeptidase antibody at 2µg/ml + 293T whole cell lysate

Secondary

Goat polyclonal to rabbit IgG at 1/10000 dilution

Predicted band size: 57 kDa

Observed band size: 57 kDa

## Usage

For Research Use Only. Not for use in diagnostic or therapeutic procedures.