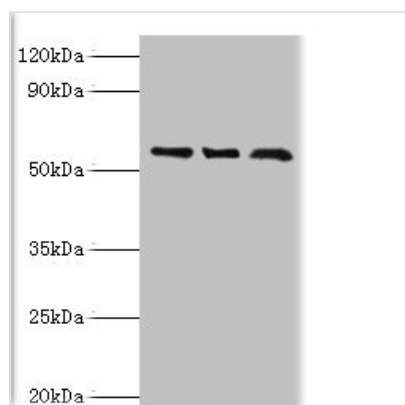




TBL1XR1 Antibody

Product Code	CSB-PA883647ESR1HU
Storage	Upon receipt, store at -20°C or -80°C. Avoid repeated freeze.
Uniprot No.	Q9BZK7
Immunogen	Recombinant Human F-box-like/WD repeat-containing protein TBL1XR1 protein (1-180AA)
Raised In	Rabbit
Species Reactivity	Human, Mouse
Tested Applications	ELISA, WB, IHC; Recommended dilution: WB:1:500-1:2000, IHC:1:20-1:200
Form	Liquid
Conjugate	Non-conjugated
Storage Buffer	PBS with 0.02% sodium azide, 50% glycerol, pH7.3.
Purification Method	Antigen Affinity Purified
Isotype	IgG
Clonality	Polyclonal
Alias	F-box-like/WD repeat-containing protein TBL1XR1 (Nuclear receptor corepressor/HDAC3 complex subunit TBLR1) (TBL1-related protein 1) (Transducin beta-like 1X-related protein 1), TBL1XR1, IRA1 TBLR1
Immunogen Species	Homo sapiens (Human)
Research Area	Epigenetics and Nuclear Signaling
Target Names	TBL1XR1

Image



Western blot

All lanes: F-box-like/WD repeat-containing protein TBL1XR1 antibody at 10µg/ml

Lane 1: MCF-7 whole cell lysate

Lane 2: Mouse heart tissue

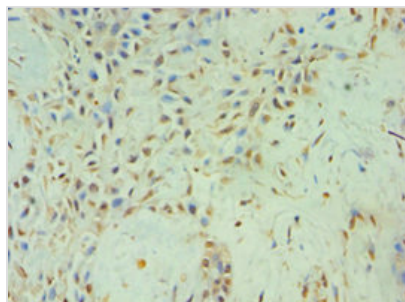
Lane 3: K562 whole cell lysate

Secondary

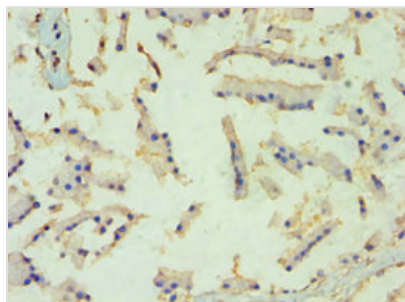
Goat polyclonal to rabbit IgG at 1/10000 dilution

Predicted band size: 56 kDa

Observed band size: 56 kDa



Immunohistochemistry of paraffin-embedded human breast cancer using CSB-PA883647ESR1HU at dilution of 1:100



Immunohistochemistry of paraffin-embedded human prostate tissue using CSB-PA883647ESR1HU at dilution of 1:100

Usage

For Research Use Only. Not for use in diagnostic or therapeutic procedures.