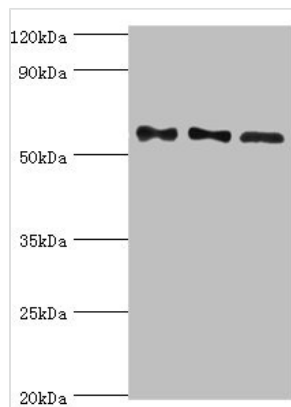




PPP3CC Antibody

Product Code	CSB-PA018574ESR1HU
Storage	Upon receipt, store at -20°C or -80°C. Avoid repeated freeze.
Uniprot No.	P48454
Immunogen	Recombinant Human Serine/threonine-protein phosphatase 2B catalytic subunit gamma isoform protein (373-512AA)
Raised In	Rabbit
Species Reactivity	Human, Rat
Tested Applications	ELISA, WB, IHC; Recommended dilution: WB:1:200-1:1000, IHC:1:20-1:200
Form	Liquid
Conjugate	Non-conjugated
Storage Buffer	PBS with 0.02% sodium azide, 50% glycerol, pH7.3.
Purification Method	Antigen Affinity Purified
Isotype	IgG
Clonality	Polyclonal
Alias	Serine/threonine-protein phosphatase 2B catalytic subunit gamma isoform (EC 3.1.3.16) (CAM-PRP catalytic subunit) (Calcineurin, testis-specific catalytic subunit) (Calmodulin-dependent calcineurin A subunit gamma isoform), PPP3CC, CALNA3 CNA3
Immunogen Species	Homo sapiens (Human)
Research Area	Signal Transduction
Target Names	PPP3CC

Image



Western blot

All lanes: Serine/threonine-protein phosphatase 2B catalytic subunit gamma isoform antibody at 10µg/ml

Lane 1: Rat brain tissue

Lane 2: MCF-7 whole cell lysate

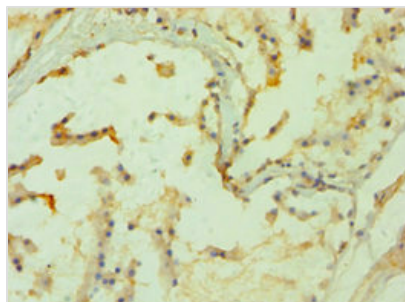
Lane 3: Rat skeletal muscle tissue

Secondary

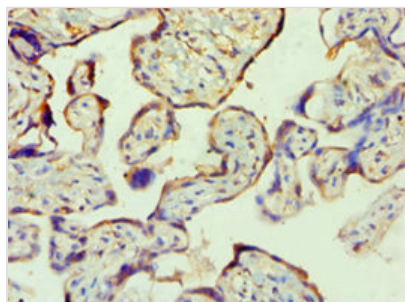
Goat polyclonal to rabbit IgG at 1/10000 dilution

Predicted band size: 59, 58, 60 kDa

Observed band size: 59 kDa



Immunohistochemistry of paraffin-embedded human prostate tissue using CSB-PA018574ESR1HU at dilution of 1:100



Immunohistochemistry of paraffin-embedded human placenta tissue using CSB-PA018574ESR1HU at dilution of 1:100