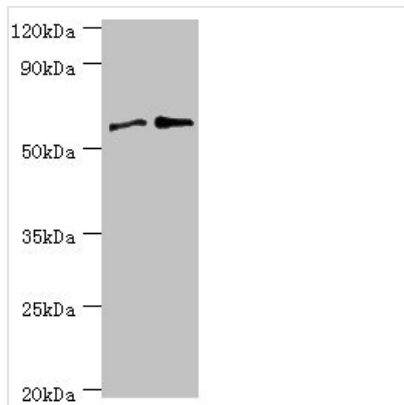




# PPP3CC Antibody

<b>Product Code</b>	CSB-PA018574ESR2HU
<b>Storage</b>	Upon receipt, store at -20°C or -80°C. Avoid repeated freeze.
<b>Uniprot No.</b>	P48454
<b>Immunogen</b>	Recombinant Human Serine/threonine-protein phosphatase 2B catalytic subunit gamma isoform protein (373-512AA)
<b>Raised In</b>	Rabbit
<b>Species Reactivity</b>	Human, Rat
<b>Tested Applications</b>	ELISA, WB, IHC; Recommended dilution: WB:1:200-1:1000, IHC:1:20-1:200
<b>Form</b>	Liquid
<b>Conjugate</b>	Non-conjugated
<b>Storage Buffer</b>	PBS with 0.02% sodium azide, 50% glycerol, pH7.3.
<b>Purification Method</b>	Antigen Affinity Purified
<b>Isotype</b>	IgG
<b>Clonality</b>	Polyclonal
<b>Alias</b>	Serine/threonine-protein phosphatase 2B catalytic subunit gamma isoform (EC 3.1.3.16) (CAM-PRP catalytic subunit) (Calcineurin, testis-specific catalytic subunit) (Calmodulin-dependent calcineurin A subunit gamma isoform), PPP3CC, CALNA3 CNA3
<b>Immunogen Species</b>	Homo sapiens (Human)
<b>Research Area</b>	Signal Transduction
<b>Target Names</b>	PPP3CC

## Image



### Western blot

All lanes: Serine/threonine-protein phosphatase 2B catalytic subunit gamma isoform antibody at 8µg/ml

Lane 1: Rat brain tissue

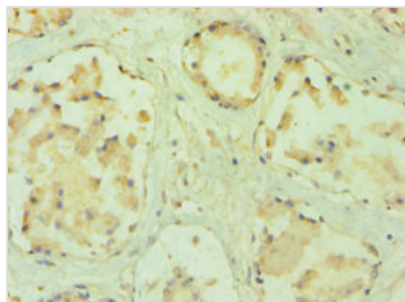
Lane 2: MCF-7 whole cell lysate

Secondary

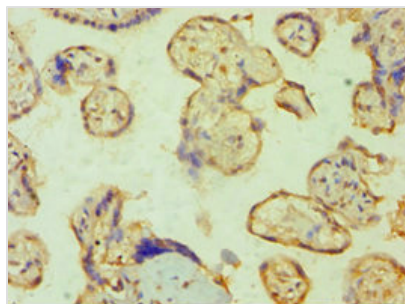
Goat polyclonal to rabbit IgG at 1/10000 dilution

Predicted band size: 59, 58, 60 kDa

Observed band size: 59 kDa



Immunohistochemistry of paraffin-embedded human prostate tissue using CSB-PA018574ESR2HU at dilution of 1:100



Immunohistochemistry of paraffin-embedded human placenta tissue using CSB-PA018574ESR2HU at dilution of 1:100

## Usage

For Research Use Only. Not for use in diagnostic or therapeutic procedures.