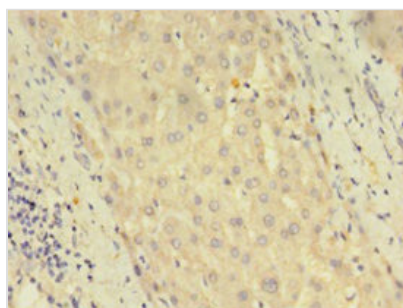




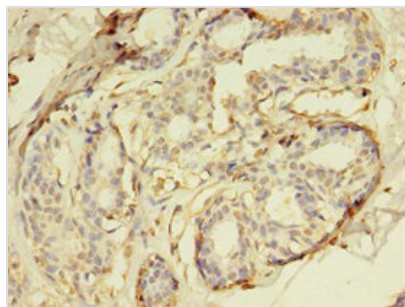
DUSP26 Antibody

Product Code	CSB-PA863128LA01HU
Storage	Upon receipt, store at -20°C or -80°C. Avoid repeated freeze.
Uniprot No.	Q9BV47
Immunogen	Recombinant Human Dual specificity protein phosphatase 26 protein (1-211AA)
Raised In	Rabbit
Species Reactivity	Human
Tested Applications	ELISA, IHC, IF; Recommended dilution: IHC:1:20-1:200, IF:1:50-1:500
Form	Liquid
Conjugate	Non-conjugated
Storage Buffer	Preservative: 0.03% Proclin 300 Constituents: 50% Glycerol, 0.01M PBS, PH 7.4
Purification Method	>95%, Protein G purified
Isotype	IgG
Clonality	Polyclonal
Alias	Dual specificity protein phosphatase 26 (EC 3.1.3.16) (EC 3.1.3.48) (Dual specificity phosphatase SKRP3) (Low-molecular-mass dual-specificity phosphatase 4) (DSP-4) (LDP-4) (Mitogen-activated protein kinase phosphatase 8) (MAP kinase phosphatase 8) (MKP-8) (Novel amplified gene in thyroid anaplastic cancer), DUSP26, DUSP24 LDP4 MKP8 NATA1 SKRP3
Immunogen Species	Homo sapiens (Human)
Research Area	Cell Biology
Target Names	DUSP26

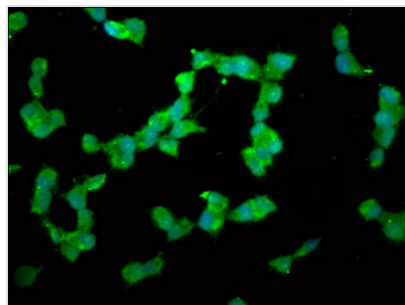
Image



Immunohistochemistry of paraffin-embedded human liver tissue using CSB-PA863128LA01HU at dilution of 1:100



Immunohistochemistry of paraffin-embedded human breast cancer using CSB-PA863128LA01HU at dilution of 1:100



Immunofluorescence staining of SH-SY5Y cells with CSB-PA863128LA01HU at 1:200, counter-stained with DAPI. The cells were fixed in 4% formaldehyde, permeabilized using 0.2% Triton X-100 and blocked in 10% normal Goat Serum. The cells were then incubated with the antibody overnight at 4°C. The secondary antibody was Alexa Fluor 488-conjugated AffiniPure Goat Anti-Rabbit IgG(H+L).