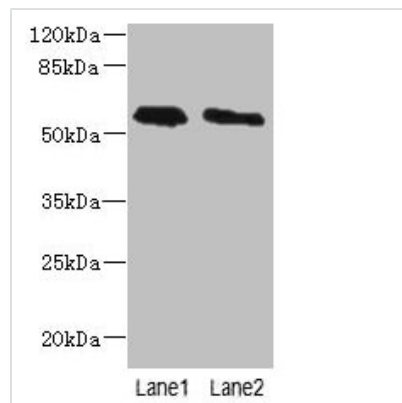




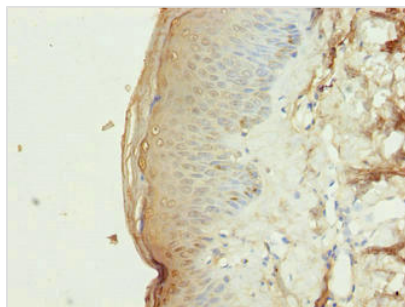
# PLD4 Antibody

|                            |   |
|----------------------------|---|
| <b>Product Code</b>        | CSB-PA839298LA01HU  |
| <b>Storage</b>             | Upon receipt, store at -20°C or -80°C. Avoid repeated freeze.   |
| <b>Uniprot No.</b>         | Q96BZ4  |
| <b>Immunogen</b>           | Recombinant Human Phospholipase D4 protein (52-506AA)   |
| <b>Raised In</b>           | Rabbit  |
| <b>Species Reactivity</b>  | Human   |
| <b>Tested Applications</b> | ELISA, WB, IHC, IF; Recommended dilution: WB:1:500-1:5000, IHC:1:20-1:200, IF:1:50-1:200  |
| <b>Form</b>                | Liquid  |
| <b>Conjugate</b>           | Non-conjugated  |
| <b>Storage Buffer</b>      | Preservative: 0.03% Proclin 300<br>Constituents: 50% Glycerol, 0.01M PBS, PH 7.4  |
| <b>Purification Method</b> | >95%, Protein G purified  |
| <b>Isotype</b>             | IgG   |
| <b>Clonality</b>           | Polyclonal  |
| <b>Alias</b>               | Phospholipase D4 (PLD 4) (EC 3.1.4.4) (Choline phosphatase 4) (Phosphatidylcholine-hydrolyzing phospholipase D4), PLD4, C14orf175 |
| <b>Immunogen Species</b>   | Homo sapiens (Human)  |
| <b>Research Area</b>       | Cardiovascular  |
| <b>Target Names</b>        | PLD4  |

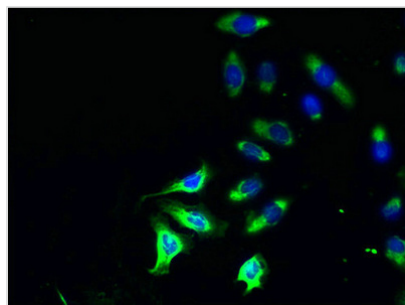
## Image



Western blot  
 All lanes: PLD4 antibody at 4µg/ml  
 Lane 1: THP-1 whole cell lysate  
 Lane 2: Human placenta tissue  
 Secondary  
 Goat polyclonal to rabbit IgG at 1/10000 dilution  
 Predicted band size: 56 kDa  
 Observed band size: 56 kDa



Immunohistochemistry of paraffin-embedded human skin tissue using CSB-PA839298LA01HU at dilution of 1:100



Immunofluorescent analysis of A549 cells using CSB-PA839298LA01HU at dilution of 1:100 and Alexa Fluor 488-conjugated AffiniPure Goat Anti-Rabbit IgG(H+L)

## Usage

For Research Use Only. Not for use in diagnostic or therapeutic procedures.